

# CAMBRIDGE MANOR

539 North Broad Street, Elizabeth, NJ 07208 (908) 998-2929



The Union County city of Elizabeth is home to Cambridge Manor, an intimate collection of 125 residences. The newly renovated residences at Cambridge Manor feature studio, one and two bedroom apartments ranging in size from 500 to 925 square feet of living space. Interiors boast a number of sought after appointments, including eat-in kitchens with refrigerators, gas range, carpeting and hardwood flooring, air conditioning and walk-in closets. Residents enjoy living close to the popular Greenbelt Park and with a number of walking paths. An onsite laundry facility and 24-hour maintenance are added conveniences.

[www.CambridgeManorNJ.com](http://www.CambridgeManorNJ.com) (908) 998-2929



WE ARE AN EQUAL HOUSING OPPORTUNITY PROVIDER. WE DO NOT DISCRIMINATE ON THE BASIS OF RACE, COLOR, SEX, NATIONAL ORIGIN, RELIGION, HANDICAP OR FAMILIAL STATUS.

WF-Makor103019



# Cambridge Manor

Bedrooms	Plan	Baths	Area	Pricing
Studio	Studio	1	500 sq. ft.	\$1370
1	One Bedroom	1	560-615 sq. ft.	\$1390 - \$1670
2	Two Bedroom	1	925 sq. ft.	\$1740

Rent includes: Heat, Hot Water, Cooking Gas \*All prices are subject to change.

## Apartment Amenities

- Air Conditioning
- New/Renovated Interiors
- Eat-In Kitchen
- Plush Wall-To-Wall Carpet
- Hardwood Floors
- Walk-In Closet in Select Units

## Community Amenities

- 24-Hour Emergency Maintenance
- Laundry Facilities
- Security Lighting

## Appliances

- Cook Top
- Refrigerator/Freezer
- Oven/Range
- Wall Oven
- Range Hood

Visit our website - [www.CambridgeManorNJ.com](http://www.CambridgeManorNJ.com)

## Rental Office Hours

Monday	Tuesday	Wednesday	Thursday	Friday	Saturday	Sunday
9-4	9-4	9-4	9-4	9-4	closed	closed

### When you decide to join us, please provide us the following at time of application:

- Two Personal Checks or Money Orders. We do not accept cash:
  1. Non-refundable Application processing Fee payable to GARDEN HOMES. \$50 for 1st Applicant; \$25 for each additional Applicant.
  2. \$200 check payable to MAKOR, INC. To be applied to your Security Deposit upon approval; or refunded if your application is declined.
- Two Current Pay Stubs
- Valid Photo ID
- Social Security Card

#### Serviced By Cambridge Manor Leasing Office

539 North Broad Street  
Elizabeth, NJ 07208

We are an equal opportunity provider. We do not discriminate on the basis of race, color, sex, national origin, religion, handicap or familial status.

539 North Broad Street, Elizabeth, NJ 07208  
P: (908) 998-2929 F: (908) 363-7181

7/31/2021

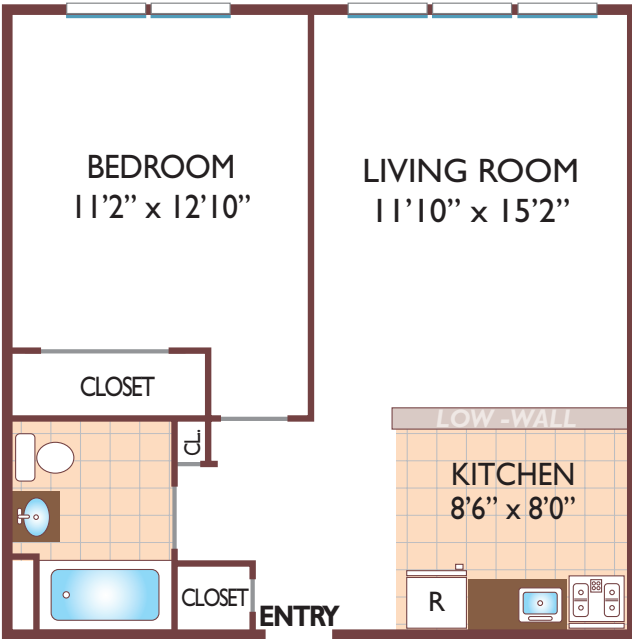


[www.CambridgeManorNJ.com](http://www.CambridgeManorNJ.com)  
[CambridgeManor.Rental@GardenCommunities.com](mailto:CambridgeManor.Rental@GardenCommunities.com)

# Cambridge Manor

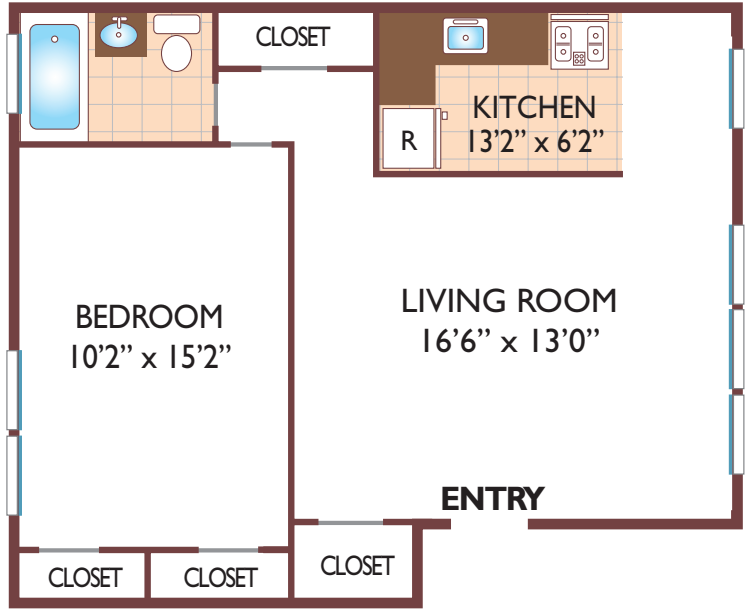
**One Bedroom Floor Plan**  
with 1 Bath, 560 sq. ft.

**CCP & Harwood**



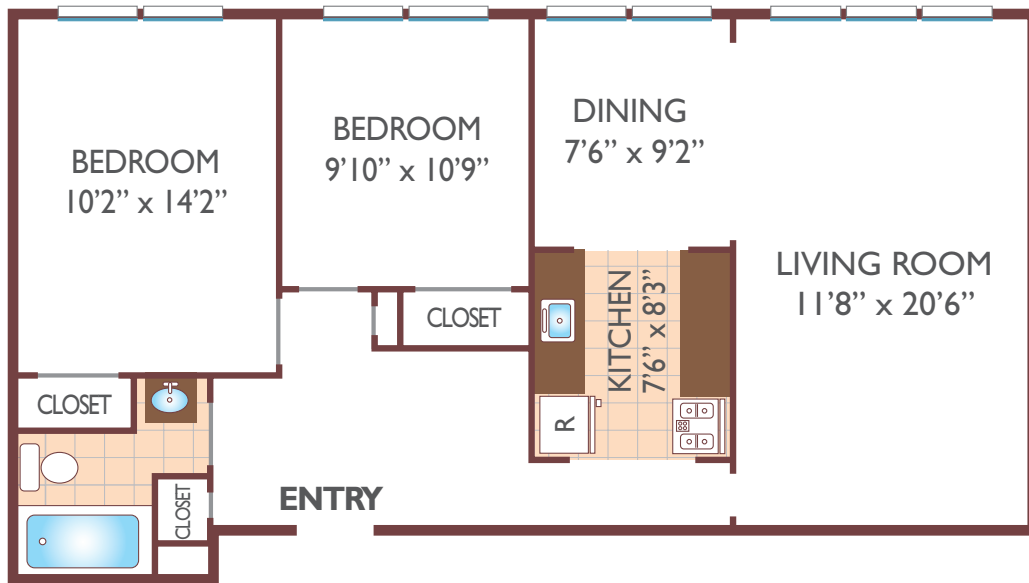
**One Bedroom Floor Plan**  
Deluxe Unit  
with 1 Bath, 615 sq. ft.

**Makor**



**Two Bedroom Floor Plan**  
Deluxe Unit  
with 1 Bath, 925 sq. ft.

**CCP & Harwood**



All dimensions, positions, locations and details are approximate.  
All rent prices and community information subject to change.

