

# PONDVIEW ESTATES

100 Julia Drive, Wharton, NJ, 07885 (973) 264-9295



Pondview Estates brings the ultimate in luxury rental living to Wharton, one of the most attractive places to live in Morris County. Pondview Estates is unlike any other community in Wharton, offering residents spacious and accommodating floor plans with exquisite features and amenities like smoke free living, a community swimming pool, a bowling alley, basketball courts, electric vehicle charging stations, Verizon Fios 100 Mbps internet, and more. Lauded as one of the ten best counties to live in the United States, Morris County offers its residents many advantages. From its commuter friendly location, casual to upscale shopping, both boutiques and big box stores, and countless grocery and dining options, Wharton affords its residents innumerable opportunities for joy, convenience, and comfort.

[www.PondviewEstatesNJ.com](http://www.PondviewEstatesNJ.com) (973) 264-9295



WE ARE AN EQUAL HOUSING OPPORTUNITY PROVIDER. WE DO NOT DISCRIMINATE ON THE BASIS OF RACE, COLOR, SEX, NATIONAL ORIGIN, RELIGION, HANDICAP OR FAMILIAL STATUS.

WF-PVE4.1.23



# Pondview Estates

Bedrooms	Plan	Baths	Area	Pricing
1	One Bedroom w/Basement	1.5	932-1031 sq. ft.	\$2525 - \$2650
1	One Bedroom w/ Loft	1.5	1364-1409 sq. ft.	\$2625 - \$2675
2	Two Bedroom w/Basement	2	1159-1254 sq. ft.	\$2850 - \$2950
2	Two Bedroom w/ Loft	2	1639-1751 sq. ft.	\$2950 - \$3050
2	Two Bedroom Townhome	2.5	1911 sq. ft.	\$3500 - \$3750
3	Three Bedroom	2	1425 sq. ft.	\$3175 - \$3275
3	Three Bedroom Townhome	2.5	2220 sq. ft.	\$4200

\*All prices are subject to change.

## Apartment Amenities

- Eat-In Kitchen
- LED Lighting
- Quartz Kitchen Countertops
- Voluminous 9' High Ceilings
- Generous Closet Space
- Living Room with Private Balcony/Patio
- Resident Controlled Central Air & Heat
- Washer & Dryer in Apartment
- Internet Included
- Oversized 8' Glass Sliding Door
- USB Charging Ports

## Community Amenities

- Accessible Jogging/Walking/Bike Trail
- Bowling Alley
- Cold Storage
- Playground
- Amazon Lockers
- Cable Ready
- Dog Run
- Swimming Pool
- Basketball Court(s)
- Clubhouse
- EV Charging Stations
- Tennis Court(s)

## Appliances

- Dishwasher
- Range Hood
- Microwave
- Refrigerator/Freezer
- Oven/Range

Visit our website - [www.PondviewEstatesNJ.com](http://www.PondviewEstatesNJ.com)

## Rental Office Hours

Monday	Tuesday	Wednesday	Thursday	Friday	Saturday	Sunday
9-5	9-5	9-6	9-5	9-5	10-5	10-5

When you decide to rent with Garden Communities, the following items will be required when you submit your application:

- Non-refundable online application processing Fee. \$75 per applicant
- An online deposit of \$500 in order to reserve an apartment. This amount will be applied to your first month's rent upon approval and ONLY refunded if your application is declined.
- A valid photo ID, social security card and two current pay stubs.

We are an equal opportunity provider. We do not discriminate on the basis of race, color, sex, national origin, religion, handicap or familial status.

100 Julia Drive, Wharton, NJ 07885  
P: (973) 264-9295

6/1/2023



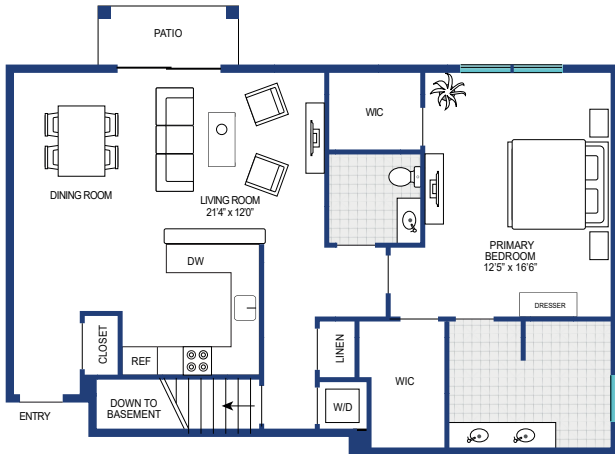
[www.PondviewEstatesNJ.com](http://www.PondviewEstatesNJ.com)  
[Pondview.Rental@GardenCommunities.com](mailto:Pondview.Rental@GardenCommunities.com)

# PONDVIEW ESTATES

Rockaway, N.J.

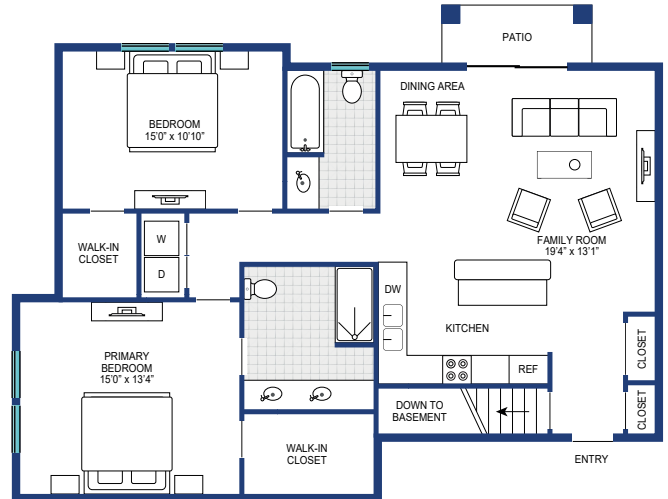
**One Bedroom Floor Plan**  
with 1.5 Bath  
First Floor

1031 Sq. Ft.



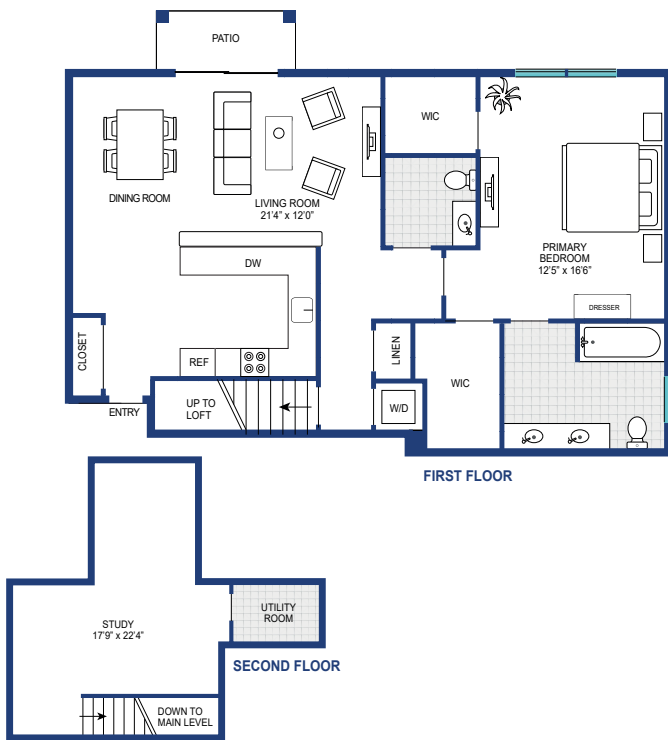
**Two Bedroom Floor Plan**  
with 2 Bath  
First Floor

1252 Sq. Ft.



**One Bedroom Floor Plan**  
with Loft and 1.5 Bath  
Second Floor

1,364 sq. ft.



**Two Bedroom Floor Plan**  
with Loft and 2 Bath,  
Second Floor

1672 Sq. Ft.



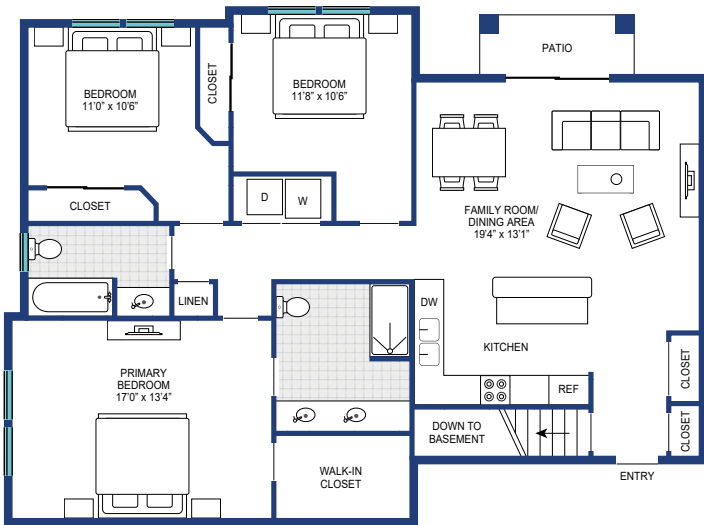
All dimensions, positions, locations and details are approximate. All rent prices and community information subject to change.

# PONDVIEW ESTATES

Rockaway, N.J.

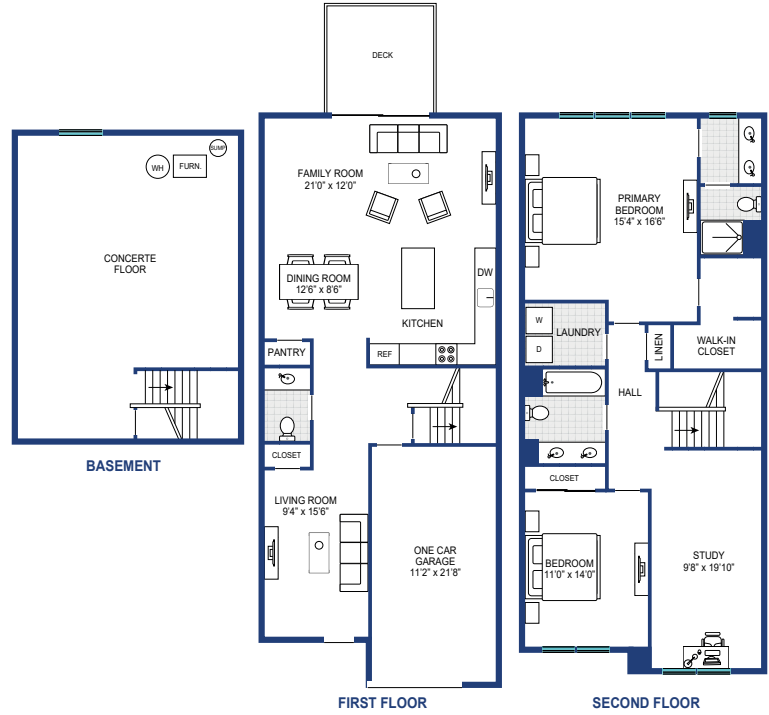
**Three Bedroom Floor Plan**  
with 2 Bath  
First Floor

1,425 sq. ft.



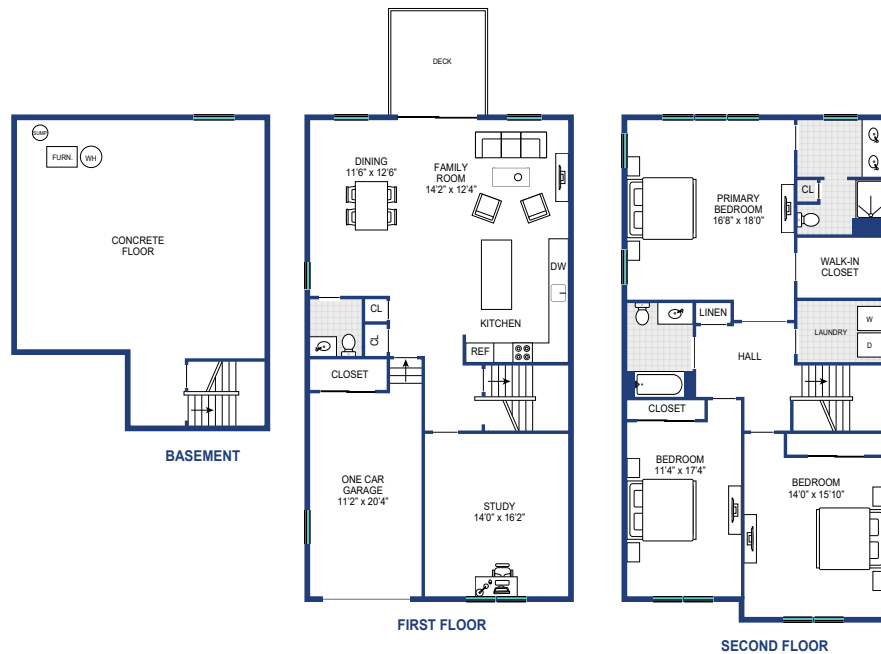
**Two Bedroom Floor Plan**  
with 2.5 Bath

1,911 sq. ft.



**Three Bedroom Floor Plan**  
with 2.5 Bath

2,220 sq. ft.



All dimensions, positions, locations and details are approximate. All rent prices and community information subject to change.