



Talmadge Village

5 Shetland Court • Edison, NJ 08817 • 732.549.7999

The Middlesex County Township of Edison is home to Talmadge Village, a collection of 330 apartments.

Layouts include one bedroom apartments, and three bedroom duplexes, that range in size up to 1020 square feet of living space. Each residence includes a washer and dryer, dishwasher, refrigerator, oven, carpeting, central air conditioning, walk-in closet, deck, garages (in most homes), and extra storage.

Residents enjoy having access to an onsite swimming pool and 24-hour emergency maintenance. Close public transportation options makes this an ideal location for commuters.



DIRECTIONS

Take 287 to exit 2A for NJ-27N towards Metuchen. Turn left onto Bridge St. Turn left onto New Durham Road for 1 mile. Turn right onto Reading Rd and continue straight. The Leasing Office is on your right.

SERVICED BY

Durham Woods Leasing Office
32-N Reading Road
Edison, NJ 08817
732.549.7999

Talmadge Village

Bedrooms	Plan	Baths	Area	Pricing
1	The Douglas	1	659 sq. ft.	\$1425 - \$1600
3	The Elm	2	1020 sq. ft.	\$2190 - \$2385

*All prices are subject to change.

Apartment Amenities

- Plush Wall-To-Wall Carpet
- Walk-In Closet in Select Units
- Private Patio or Balcony
- Washer & Dryer in Apartment
- Resident Controlled Central Air & Heat

Community Amenities

- 24-Hour Emergency Maintenance
- Natural Gas
- Swimming Pool
- Cable Ready
- Playground
- Easy Access To NYC Transportation
- Public Transit Nearby

Appliances

- Dishwasher
- Refrigerator/Freezer
- Oven/Range
- Range Hood

Visit our website - www.TalmadgeVillageNJ.com

Rental Office Hours

Monday	Tuesday	Wednesday	Thursday	Friday	Saturday	Sunday
9-5	9-5	9-5	9-7	9-5	11-5	11-5

When you decide to join us, please provide us the following at time of application:

- Two Personal Checks or Money Orders. We do not accept cash:
 1. Non-refundable Application processing Fee payable to GARDEN HOMES. \$75 per applicant.
 2. \$200 check payable to TALMADGE VILLAGE LLC. To be applied to your Security Deposit upon approval; or refunded if your application is declined.
- Two Current Pay Stubs
- Valid Photo ID
- Social Security Card

Serviced By Durham Woods Leasing Office
32 N. Reading Road
Edison, NJ 08817

We are an equal opportunity provider. We do not discriminate on the basis of race, color, sex, national origin, religion, handicap or familial status.

5 Shetland Court, Edison, NJ 08817
P: (732) 210-6701 F: (732) 549-8899

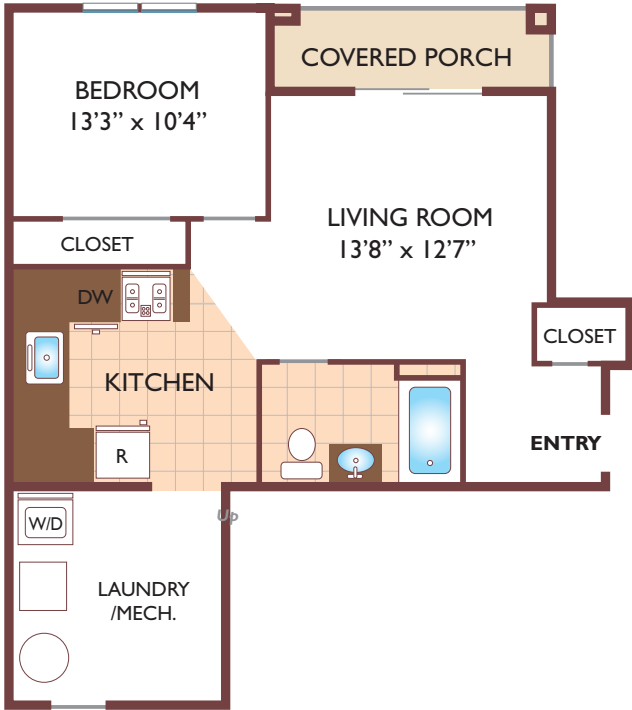
6/20/2021



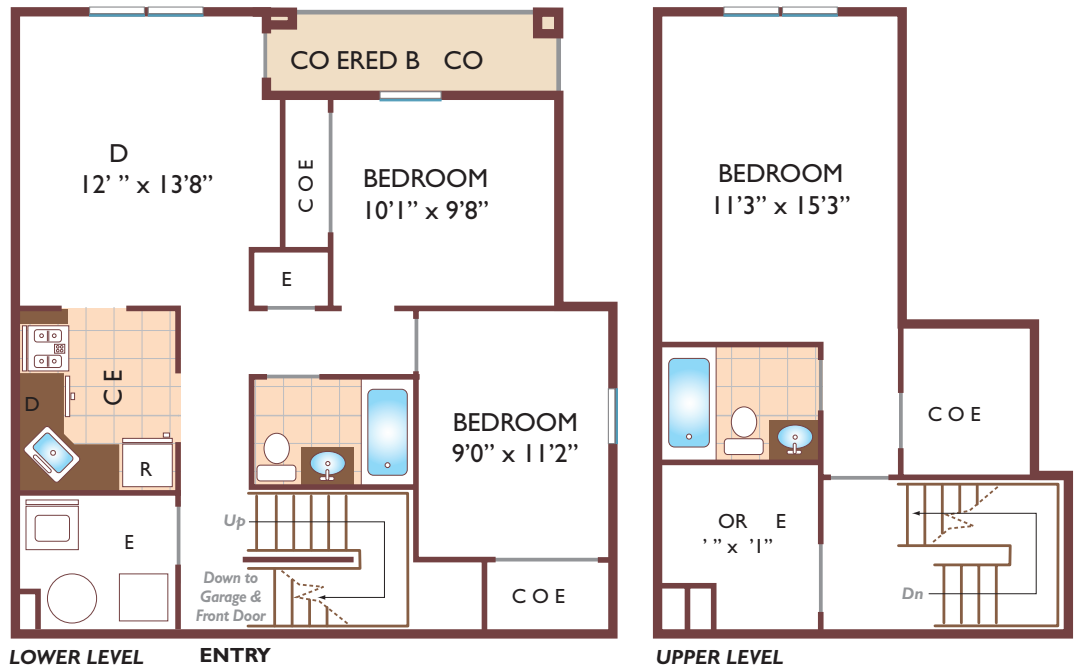
www.TalmadgeVillageNJ.com
TalmadgeVillage.Rental@GardenCommunities.com

Talmadge Village

One Bedroom Floor Plan with 1 Bath, 659 sq. ft. / The Douglas



Three Bedroom Duplex Floor Plan with 2 Baths, 1319 sq. ft. / The Elm



All dimensions, positions, locations and details are approximate.
All rent prices and community information subject to change.

