

LONDON TERRACE

713 Downing Street, Old Bridge, NJ 08859 (732) 860-5420



London Terrace is conveniently located just off of Route 9 in Middlesex County's Old Bridge Township. This community features 962 spacious one and two bedroom residences that range in size from 735 to 1885 square feet and boast a number of impressive appointments including air conditioning, dishwasher, hardwood floors and balcony or patio (per plan). Community amenities include laundry facilities, swimming pool with barbecue and picnic area, playgrounds, basketball courts, tennis court, ample free parking, garages available and 24-hour emergency maintenance. Residents also enjoy being close to mass transportation and to a number of major highways.

www.LondonTerraceNJ.com (732) 860-5420



WE ARE AN EQUAL HOUSING OPPORTUNITY PROVIDER. WE DO NOT DISCRIMINATE ON THE BASIS OF RACE, COLOR, SEX, NATIONAL ORIGIN, RELIGION, HANDICAP OR FAMILIAL STATUS.

WF-LondonTerr103119



London Terrace

Bedrooms	Plan	Baths	Area	Pricing
1	One Bedroom	1	735 sq. ft.	\$1665 - \$1685
1	One Bedroom Luxury	1	855 sq. ft.	\$1725
1	One Bedroom with Rec Room	1	1250 sq. ft.	\$1895
1	One Bedroom w/Basement	1.5	1250 sq. ft.	\$1925
1	One Bedroom Luxury with Rec Room	1	1460 sq. ft.	\$1960 - \$1990
2	Two Bedroom/1 Bath	1	1080 sq. ft.	\$1955
2	Two Bedroom Luxury/1 Bath	1	1105 sq. ft.	\$2015
2	Two Bedroom/1.5 Baths	1.5	1105 sq. ft.	\$2040
2	Two Bedroom/1 Bath with Rec Room	1	1840 sq. ft.	\$2100
2	Two Bedroom Luxury/1.5 Baths	1.5	1075 sq. ft.	\$2105
2	Two Bedroom/1.5 Baths with Rec Room	1.5	1885 sq. ft.	\$2180
2	Two Bedroom Luxury/1.5 Baths with Rec Room	1.5	1830 sq. ft.	\$2210

Rent includes: Heat, Hot Water, Cooking Gas *All prices are subject to change.

Apartment Amenities

- Air Conditioning
- Eat-In Kitchen
- Hardwood Floors
- Patio

Community Amenities

- 24-Hour Emergency Maintenance
- Basketball Court(s)
- Cable Ready
- Laundry Facilities
- Natural Gas
- Picnic/Barbecue Area
- Playground
- Security Lighting
- Swimming Pool
- Tennis Court(s)
- Verizon FIOS Available
- Walking Distance to NYC Transportation

Appliances

- Dishwasher
- Oven/Range
- Range Hood
- Refrigerator/Freezer

Visit our website - www.LondonTerraceNJ.com

Rental Office Hours

Monday	Tuesday	Wednesday	Thursday	Friday	Saturday	Sunday
8:30-4:30	8:30-7:00	8:30-4:30	8:30-4:30	10:00-4:00	9-4	Closed

When you decide to rent with Garden Communities, the following items will be required when you submit your application:

- Non-refundable online application processing Fee. \$75 per applicant
- An online deposit of \$500 in order to reserve an apartment. This amount will be applied to your first month's rent upon approval and ONLY refunded if your application is declined.
- A valid photo ID, social security card and two current pay stubs.

We are an equal opportunity provider. We do not discriminate on the basis of race, color, sex, national origin, religion, handicap or familial status.

713 Downing St, Old Bridge, NJ 08859
P: (732) 860-5420 F: (732) 727-1915

5/16/2022

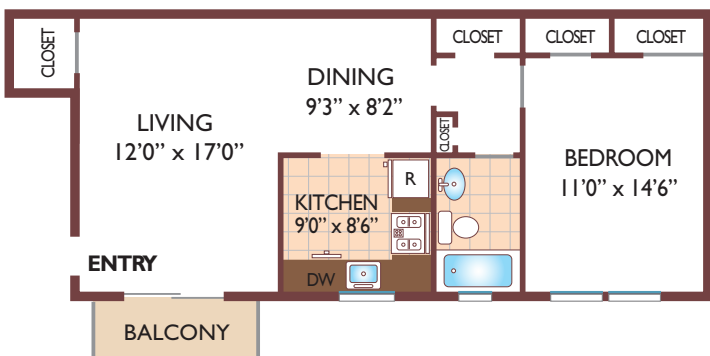


www.LondonTerraceNJ.com
LondonTerrace.Rental@GardenCommunities.com

London Terrace

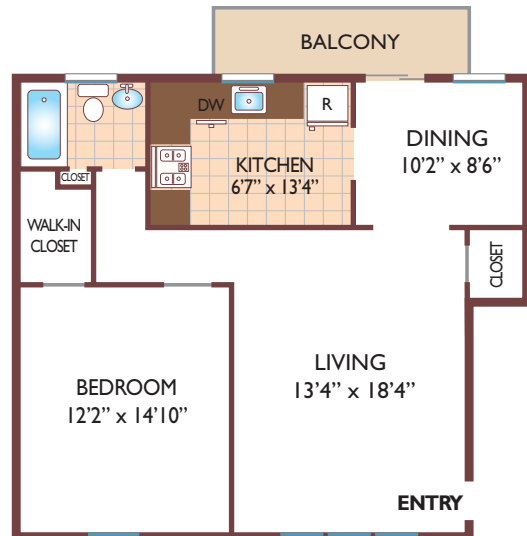
One Bedroom Floor Plan

Ground Level Unit
with 1 Bath, 735 sq. ft.



One Bedroom Floor Plan

Luxury - Ground Level Unit
with 1 Bath, 855 sq. ft.



Two Bedroom Floor Plan

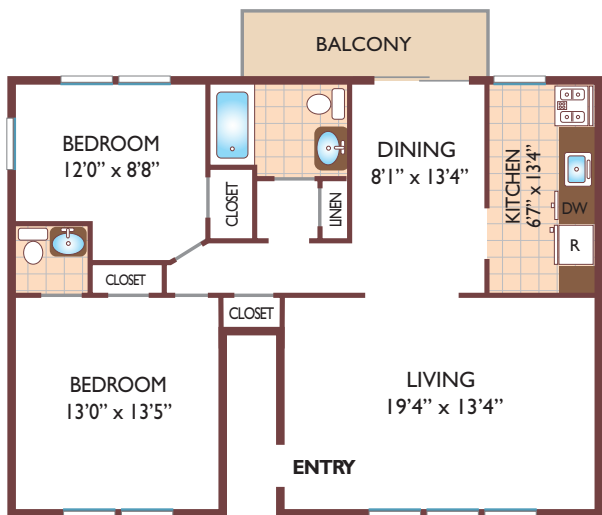
Luxury - Ground Level Unit
with 1 Bath, 1105 sq. ft.



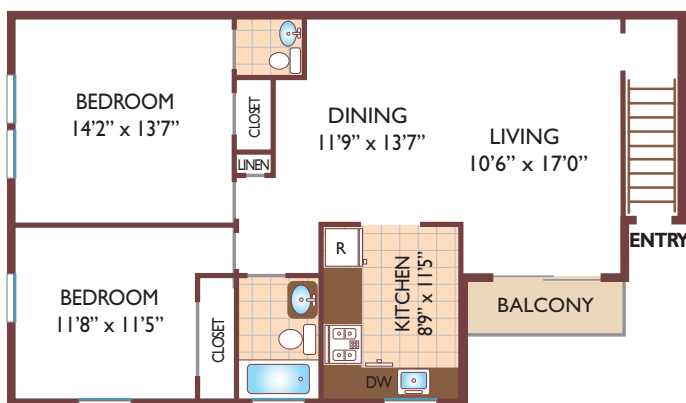
All dimensions, positions, locations and details are approximate.
All rent prices and community information subject to change.



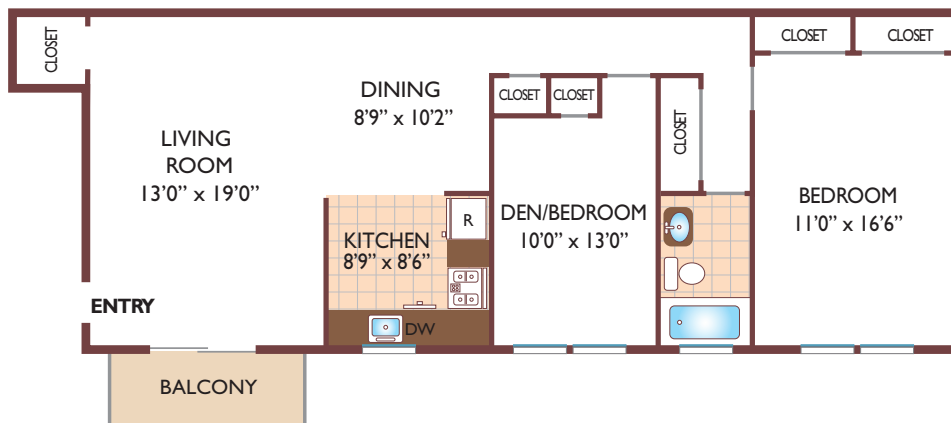
Two Bedroom Floor Plan
Luxury - Ground Level Unit
with 1½ Baths, 1075 sq. ft.



Two Bedroom Floor Plan
Upper Level Unit
with 1½ Baths, 1105 sq. ft.



Two Bedroom Floor Plan
Ground Level Unit
with 1 Bath, 1080 sq. ft.



BALCONY

 DEN/BEDROOM 10'8" x 13'0" KITCHEN 6'10" x 9'6" DINING 13'0" x 9'6"
 All dimensions, positions, locations and details are approximate.
 All rent prices and community information subject to change.



