

TERRACE VIEW GARDENS

300 - 301 Maple Avenue, North Plainfield, NJ 07060 (908) 378-8449



Terrace View is a collection of 216 garden-style apartments rising in the Somerset Borough of North Plainfield, N.J. Apartments include refrigerator and oven, hardwood floors, air conditioner and patio or balcony (per plan). One and two bedroom layouts are available and range in size from 790 to 1,015 square feet. Garages are available and an onsite laundry facilities and 24-hour emergency maintenance adds to the convenient lifestyle enjoyed by residents.

www.TerraceViewNJ.com (908) 378-8449



WE ARE AN EQUAL HOUSING OPPORTUNITY PROVIDER. WE DO NOT DISCRIMINATE ON THE BASIS OF RACE, COLOR, SEX, NATIONAL ORIGIN, RELIGION, HANDICAP OR FAMILIAL STATUS.

WF-TerraceView071317



Terrace View

Bedrooms	Plan	Baths	Area	Pricing
1	One Bedroom	1	790 sq. ft.	\$1195 - \$1245
1	One Bedroom w/ Large Kitchen	1	900 sq. ft.	\$1205 - \$1255
2	Two Bedroom - Lower Level	1	1015 sq. ft.	\$1530 - \$1580

Rent includes: Heat, Hot Water, Cooking Gas *All prices are subject to change.

Apartment Amenities

- Air Conditioning
- Walk-In Closet in Select Units
- Hardwood Floors
- Private Patio or Balcony

Community Amenities

- 24-Hour Emergency Maintenance
- Natural Gas
- Cable Ready
- Playground
- Laundry Facility
- Security Lighting

Appliances

- Oven/Range
- Range Hood
- Refrigerator/Freezer

Visit our website - www.TerraceViewNJ.com

Rental Office Hours

Monday	Tuesday	Wednesday	Thursday	Friday	Saturday	Sunday
9-5	9-5	9-5	9-5	9-5	10-5	10-5

When you decide to join us, please provide us the following at time of application:

- Two Personal Checks or Money Orders. We do not accept cash:
 1. Non-refundable Application processing Fee payable to GARDEN HOMES. \$50 for 1st Applicant; \$25 for each additional Applicant.
 2. \$200 check payable to H&W GARDENS ASSOCIATES. To be applied to your Security Deposit upon approval; or refunded if your application is declined.
- Two Current Pay Stubs
- Valid Photo ID
- Social Security Card

Serviced By Cypress Gardens Leasing Office

1165 Route 22 West #173
North Plainfield, NJ 07060

We are an equal opportunity provider. We do not discriminate on the basis of race, color, sex, national origin, religion, handicap or familial status.

300-301 Maple Avenue, North Plainfield, NJ 07060
P: (908) 378-8449 F: (908) 363-7179

7/31/2021



www.TerraceViewNJ.com
TerraceView.Rental@GardenCommunities.com

Terrace View Garden

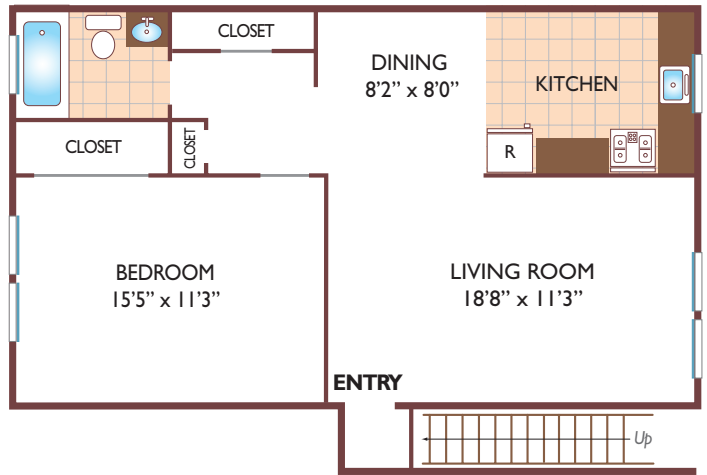
One Bedroom Floor Plan

Ground Level
with 1 Bath, 790 sq. ft.



One Bedroom Floor Plan

Upper Level
with 1 Bath, 800 sq. ft.



Two Bedroom Floor Plan

Lower Level
with 1 Bath, 1015 sq. ft.



All dimensions, positions, locations and details are approximate.
All rent prices and community information subject to change.

