

CYPRESS GARDENS

1165 Route 22 West #173, N. Plainfield, NJ 07060 (908) 336-1300



Cypress Gardens is a collection of 214 garden-style apartments located in the Somerset County Borough of North Plainfield. These spacious apartments range from 850 to 1,075 square feet of living space and boast a variety of appointments including refrigerators, ovens and hardwood flooring throughout. Onsite amenities at this community include laundry facility, 24-hour emergency maintenance and swimming pool. Close proximity to a variety of public transportation options make Cypress Gardens an ideal choice for commuters.

www.CypressGardensNJ.com (908) 336-1300



WE ARE AN EQUAL HOUSING OPPORTUNITY PROVIDER. WE DO NOT DISCRIMINATE ON THE BASIS OF RACE, COLOR, SEX, NATIONAL ORIGIN, RELIGION, HANDICAP OR FAMILIAL STATUS.

WF-Cypress071317



Cypress Gardens

Bedrooms	Plan	Baths	Area	Pricing
1	One Bedroom	1	850 sq. ft.	\$1625 - \$1675
2	Two Bedroom	1	1075 sq. ft.	\$1985 - \$2035

Rent includes: Heat and Hot Water *All prices are subject to change.

Apartment Amenities

- Air Conditioning
- Garages Available
- Hardwood Floors

Community Amenities

- 24-Hour Emergency Maintenance
- Cable Ready
- Laundry Facilities
- Natural Gas
- Public Transit Nearby
- Security Lighting
- Swimming Pool

Appliances

- Oven/Range
- Range Hood
- Refrigerator/Freezer

Visit our website - www.CypressGardensNJ.com

Rental Office Hours

Monday	Tuesday	Wednesday	Thursday	Friday	Saturday	Sunday
9-5	9-5	9-5	9-5	9-5	10-5	9 - 3

When you decide to rent with Garden Communities, the following items will be required when you submit your application:

- Non-refundable online application processing Fee. \$75 per applicant
- An online deposit of \$200 in order to reserve an apartment. This amount will be applied to your first month's rent upon approval and ONLY refunded if your application is declined.
- A valid photo ID, social security card and two current pay stubs.

We are an equal opportunity provider. We do not discriminate on the basis of race, color, sex, national origin, religion, handicap or familial status.

1165 Route 22 West #173, North Plainfield, NJ 07060
P: (908) 336-1300 F: (908) 363-7179

4/1/2023



www.CypressGardensNJ.com
CypressGardens.Rental@GardenCommunities.com

Cypress Gardens

One Bedroom Floor Plan

Ground Level

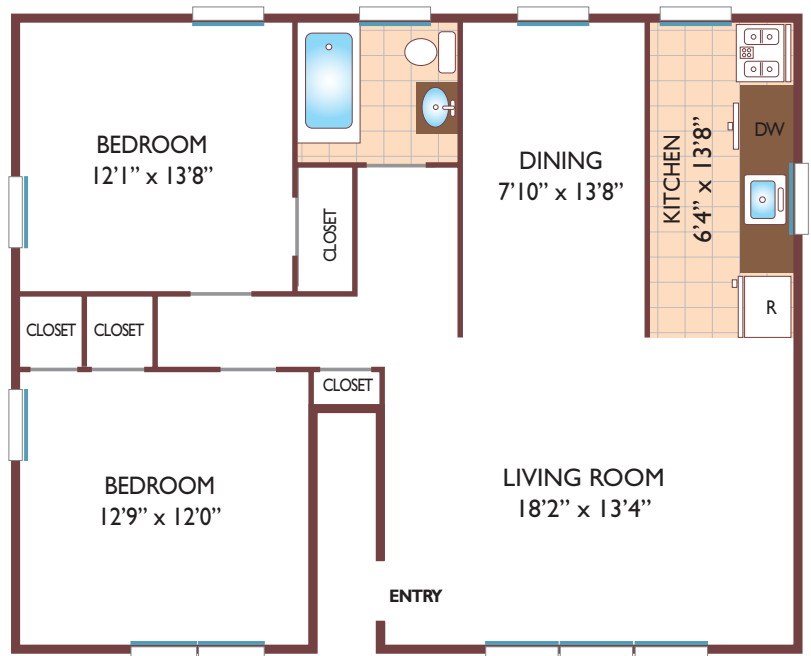
with 1 Bath, 850 sq. ft.



Two Bedroom Floor Plan

Ground Level

with 1 Bath, 1075 sq. ft.



All dimensions, positions, locations and details are approximate.

All rent prices and community information subject to change.