

# BROOKFIELD GARDENS

34 Western Avenue #11, Ewing NJ 08618 (609) 796-2036



Brookfield Gardens is a collection of 192 garden style apartments, located in the Mercer County Township of Ewing, N.J. Each newly renovated unit features kitchens with refrigerators and gas range, hardwood flooring throughout, and air conditioning. Residences range from 775 to 1,040 square feet of living space and are available with one, two or three bedrooms. In addition to the convenience of 24-hour emergency maintenance, and ample parking, residents of Brookfield Gardens enjoy the ideal location just minutes from a number of major highways, including Routes 29, 195, 295 and the New Jersey Turnpike.

[www.BrookfieldGardensNJ.com](http://www.BrookfieldGardensNJ.com) (609) 796-2036



WE ARE AN EQUAL HOUSING OPPORTUNITY PROVIDER. WE DO NOT DISCRIMINATE ON THE BASIS OF RACE, COLOR, SEX, NATIONAL ORIGIN, RELIGION, HANDICAP OR FAMILIAL STATUS.

WF-Brookfield071317



# Brookfield Gardens

Bedrooms	Plan	Baths	Area	Pricing
1	1 bedroom	1	775 sq. ft.	\$1065
2	2 Bedroom	1	890 sq. ft.	\$1425
3	Townhome	1.5	1050 sq. ft.	\$1735

Rent includes: Heat, Hot Water, Cooking Gas. \*All prices are subject to change.

## Apartment Amenities

- Air Conditioning
- Spacious Floor Plans
- Hardwood Floors
- New/Renovated Interiors

## Community Amenities

- 24-Hour Emergency Maintenance
- Natural Gas
- Verizon FIOS Available
- Cable Ready
- Public Transit Nearby
- Friendly, Quiet Neighborhood
- Security Lighting

## Appliances

- Oven/Range
- Range Hood
- Refrigerator/Freezer

Visit our website - [www.BrookfieldGardensNJ.com](http://www.BrookfieldGardensNJ.com)

## Rental Office Hours

Monday	Tuesday	Wednesday	Thursday	Friday	Saturday	Sunday
8-4	8-4	8-4	8-4	8-4	By appt.	Closed

## When you decide to join us, please provide us the following at time of application:

- Two Personal Checks or Money Orders. We do not accept cash:
  1. Non-refundable Application processing Fee payable to GARDEN HOMES. \$50 for 1st Applicant; \$25 for each additional Applicant.
  2. \$200 check payable to BROOKFIELD GARDENS ASSOCIATES. To be applied to your Security Deposit upon approval; or refunded if your application is declined.
- Two Current Pay Stubs
- Valid Photo ID
- Social Security Card

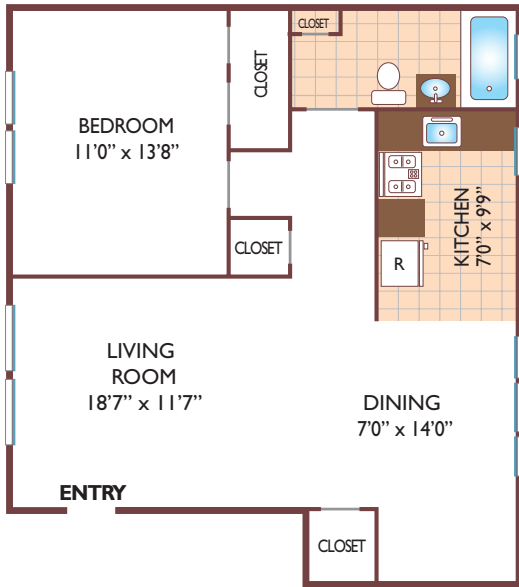
We are an equal opportunity provider. We do not discriminate on the basis of race, color, sex, national origin, religion, handicap or familial status.



# Brookfield Gardens

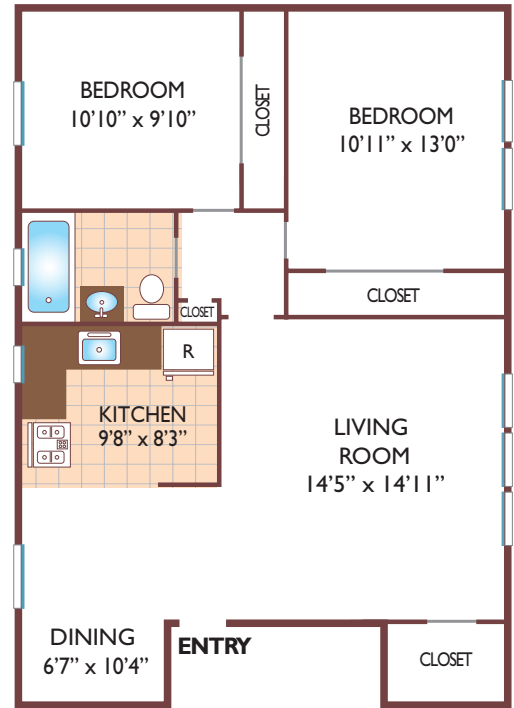
## One Bedroom Floor Plan

Lower, with 1 Bath, 775 sq. ft.



## Two Bedroom Floor Plan

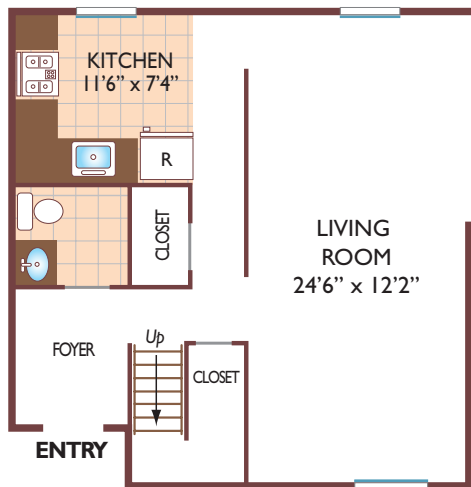
Lower, with 1 Bath, 890 sq. ft.



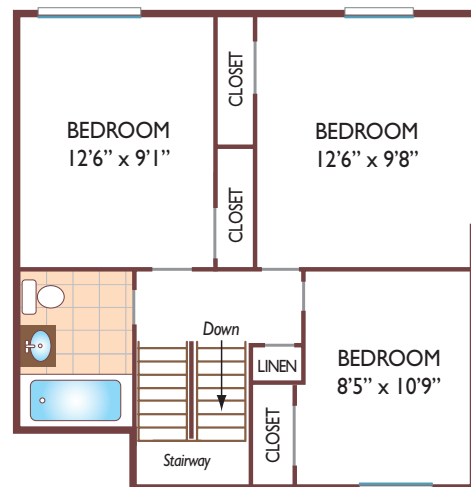
## Three Bedroom Floor Plan

TownHome

with 1 & 1/2 Bath, 1050 sq. ft.



FIRST FLOOR PLAN



SECOND FLOOR PLAN

All dimensions, positions, locations and details are approximate.

All rent prices and community information subject to change.

