

POWDER MILL HEIGHTS

2110 Gates Court, Morris Plains NJ 07950 (973) 665-6406



Powder Mill Heights is nestled atop Parsippany's Watnong Mountain in Morris Plains, NJ. The 356 residence community boasts one and two story rental homes with one, two or three bedrooms that range in size from 1,100 to 2,660 square feet. Each apartment features plush wall-to-wall carpeting, color-coordinated ceramic tile baths, whirlpool tubs, Kohler fixtures, Moen faucets, laundry rooms equipped with washers and dryers and individually controlled heat and central air. Most residences also offer private balconies to maximize the panoramic views. Onsite recreational amenities include a clubhouse with indoor swimming pool, health club, meeting room and much more!

www.PowderMillHeightsNJ.com (973) 665-6406



WE ARE AN EQUAL HOUSING OPPORTUNITY PROVIDER. WE DO NOT DISCRIMINATE ON THE BASIS OF RACE, COLOR, SEX, NATIONAL ORIGIN, RELIGION, HANDICAP OR FAMILIAL STATUS.

WF-PowderMill110416



Powder Mill Heights

Bedrooms	Plan	Baths	Area	Pricing
1	Model P1W/P1E	1	1120 sq. ft.	\$2025 - \$2125
2	Model P2WB/P2EB	2	1625 sq. ft.	\$2325 - \$2475
2	Model P2WSB/P2ESB	2	2220 sq. ft.	\$2325 - \$2825
2	Model P2ED Duplex	2.5	2100 sq. ft.	\$2775
3	Three Bedroom	2.5	2245 sq. ft.	\$2875
3	Model P3ED Duplex	2.5	2325 sq. ft.	\$3025 - \$3325

Rent includes: Water and Sewer. *All prices are subject to change.

Apartment Amenities

- Eat-In Kitchen
- Private Patio or Balcony
- Washer & Dryer in Apartment
- Jet Tub
- Underground Assigned Parking
- Plush Wall-To-Wall Carpet
- Walk-In Closet in Select Units

Community Amenities

- 24-Hour Emergency Maintenance
- Daytime Concierge
- Security Guard
- Verizon FIOS Available
- Cable Ready
- Natural Gas
- Security Lighting
- Clubhouse
- Sauna/Hot Tub
- Swimming Pool

Appliances

- Dishwasher
- Refrigerator/Freezer
- Microwave
- Oven/Range

Visit our website - www.PowderMillHeightsNJ.com

Rental Office Hours

Monday	Tuesday	Wednesday	Thursday	Friday	Saturday	Sunday
9-5	9-5	9-5	9-5	9-5	11-5	Closed

When you decide to join us, please provide us the following at time of application:

- Two Personal Checks or Money Orders. We do not accept cash:
 1. Non-refundable Application processing Fee payable to GARDEN HOMES. \$50 for 1st Applicant; \$25 for each additional Applicant.
 2. \$200 check payable to POWDER MILL HEIGHTS. To be applied to your Security Deposit upon approval; or refunded if your application is declined.
- Two Current Pay Stubs
- Valid Photo ID
- Social Security Card

We are an equal opportunity provider. We do not discriminate on the basis of race, color, sex, national origin, religion, handicap or familial status.

2110 Gates Court, Morris Plains, NJ 07950
P: (973) 665-6406 F: (973) 261-5135

6/20/2021



www.PowderMillHeightsNJ.com
PowderMillHeights.Rental@GardenCommunities.com

Powder Mill Heights

One Bedroom Floor Plan

with 1 Bath, 1120 sq. ft.

Model: P1W/P1E



Two Bedroom Floor Plan

with 2 Baths, 1625 sq. ft.

Model: P2W/P2E
with Balcony

Model: P2WB/P2EB
with Terrace



Two Bedroom Floor Plan

with 2 Baths, 2220 sq. ft.

Model: P2WSB/P2ESB



All dimensions, positions, locations and details are approximate.

All rent prices and community information subject to change.



Powder Mill Heights

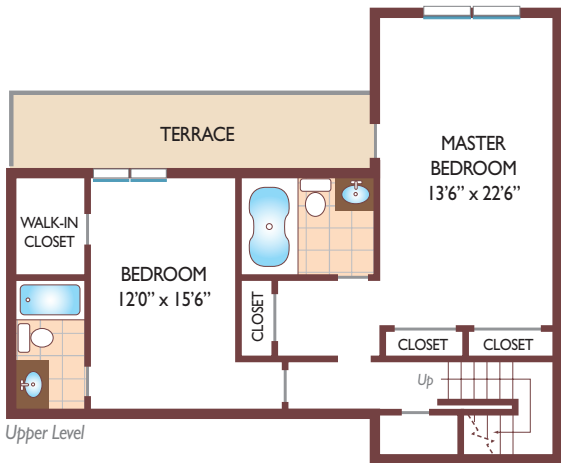
Two Bedroom Floor Plan

Duplex- with 2.5 Baths, 2100 sq. ft.

Model: P2ED



Lower Level



Upper Level

Three Bedroom Floor Plan

with 2.5 Baths, 2325 sq. ft.

Model: P3ED



Lower Level



Upper Level

All dimensions, positions, locations and details are approximate.

All rent prices and community information subject to change.

