

# WATERSIDE VILLAGE

26 Waterside Drive, Little Ferry, NJ 07643 (201) 781-1906



Waterside Village can be found in the Bergen County Borough of Little Ferry, N.J. This collection of 324 rental apartments feature one and two bedroom residences and include an eat-in-kitchen with dishwasher, refrigerator, oven, carpeting and hardwood flooring, central air conditioning and patio or balcony (per plan). Waterside Village apartments range from 870 to 1,060 square feet of space. This community is within close proximity to a variety of outdoor recreation including a local lake. Onsite conveniences include a laundry facility and 24-hour emergency maintenance.

[www.WatersideVillageNJ.com](http://www.WatersideVillageNJ.com) (201) 781-1906



WE ARE AN EQUAL HOUSING OPPORTUNITY PROVIDER. WE DO NOT DISCRIMINATE ON THE BASIS OF RACE, COLOR, SEX, NATIONAL ORIGIN, RELIGION, HANDICAP OR FAMILIAL STATUS.

WF-Waterside010417



# Waterside Village

Bedrooms	Plan	Baths	Area	Pricing
1	Unit A	1	870 sq. ft.	\$1665
2	Unit B	1	1020 sq. ft.	\$1900 - \$2070
2	Unit C	1.5	1060 sq. ft.	\$2000

\*All prices are subject to change.

## Apartment Amenities

- Hardwood Floors
- Private Patio or Balcony
- New/Renovated Interiors
- Resident Controlled Central Air & Heat
- Plush Wall-To-Wall Carpet

## Community Amenities

- 24-Hour Emergency Maintenance
- Lake/Pond
- Security Lighting
- Cable Ready
- Laundry Facilities
- Dog Run
- Reserved Parking

## Appliances

- Dishwasher
- Oven/Range
- Refrigerator/Freezer

Visit our website - [www.WatersideVillageNJ.com](http://www.WatersideVillageNJ.com)

## Rental Office Hours

Monday	Tuesday	Wednesday	Thursday	Friday	Saturday	Sunday
9-5	9-5	9-5	9-5	9-5	Closed	Closed

## When you decide to join us, please provide us the following at time of application:

- Two Personal Checks or Money Orders. We do not accept cash:
  1. Non-refundable Application processing Fee payable to GARDEN HOMES. \$50 for 1st Applicant; \$25 for each additional Applicant.
  2. \$200 check payable to WATERSIDE PLAZA APARTMENTS LLC. To be applied to your Security Deposit upon approval; or refunded if your application is declined.
- Two Current Pay Stubs
- Valid Photo ID
- Social Security Card

We are an equal opportunity provider. We do not discriminate on the basis of race, color, sex, national origin, religion, handicap or familial status.

26 Waterside Drive, Little Ferry, NJ 07643  
P: (201) 781-1906 F: (201) 300-0135

6/20/2021

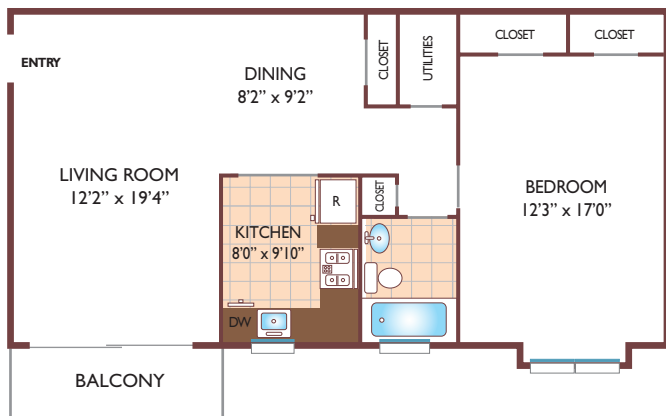


[www.WatersideVillageNJ.com](http://www.WatersideVillageNJ.com)  
[WatersideVillage.Rental@GardenCommunities.com](mailto:WatersideVillage.Rental@GardenCommunities.com)

# Waterside Village

## One Bedroom Floor Plan

Unit A • Deluxe  
with 1 Bath, 870 sq. ft.



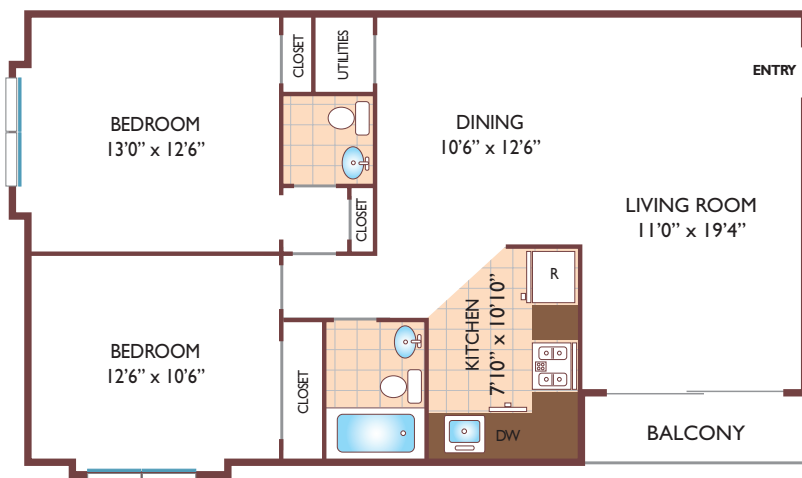
## Two Bedroom Floor Plan

Unit B • Deluxe  
with 1 Bath, 1020 sq. ft.



## Two Bedroom Floor Plan

Unit C • Superior  
with 1.5 Baths, 1060 sq. ft.



All dimensions, positions, locations and details are approximate.

All rent prices and community information subject to change.

