

RUTHERFORD HEIGHTS

666-1A Paterson Avenue, East Rutherford, NJ 07073 (201) 448-9003



Rutherford Heights is an intimate collection of 256 rental apartments located in the Bergen County town of East Rutherford. Units in this impressive complex feature one or two bedrooms, and are outfitted with many amenities including GE refrigerators, hardwood floors, air conditioning and oversized closets. Only 30-minutes to Manhattan and minutes away from highways such as Routes 3, 17, 46, the Garden State Parkway and New Jersey Turnpike. Rutherford Heights is perfect for commuters. Residents also enjoy the convenience of off-street parking, and onsite laundry facility. Public transportation and school bus pick-up are steps outside the community.

www.RutherfordHeightsNJ.com (201) 448-9003



WE ARE AN EQUAL HOUSING OPPORTUNITY PROVIDER. WE DO NOT DISCRIMINATE ON THE BASIS OF RACE, COLOR, SEX, NATIONAL ORIGIN, RELIGION, HANDICAP OR FAMILIAL STATUS.

WF-Rutherford010417



Rutherford Heights

Bedrooms	Plan	Baths	Area	Pricing
1	One Bedroom	1	770 sq. ft.	\$1690 - \$1750
2	Two Bedroom	1	935 sq. ft.	\$2185 - \$2225

Rent includes: Heat, Hot Water, Cooking Gas *All prices are subject to change.

Apartment Amenities

- Air Conditioning
- Hardwood Floors

Community Amenities

- 24-Hour Emergency Maintenance
- Easy Access To NYC Transportation
- Natural Gas
- Verizon FIOS Available
- 30 Minutes to Midtown Manhattan
- Garages Available
- Public Transit Nearby
- Cable Ready
- Laundry Facilities
- Security Lighting

Appliances

- Dishwasher
- Refrigerator/Freezer
- Oven/Range
- Range Hood

Visit our website - www.RutherfordHeightsNJ.com

Rental Office Hours

Monday	Tuesday	Wednesday	Thursday	Friday	Saturday	Sunday
9-5	9-5	9-5	9-5	9-5	by appt.	Closed

When you decide to rent with Garden Communities, the following items will be required when you submit your application:

- Non-refundable online application processing Fee. \$75 per applicant
- An online deposit of \$500 in order to reserve an apartment. This amount will be applied to your first month's rent upon approval and ONLY refunded if your application is declined.
- A valid photo ID, social security card and two current pay stubs.

We are an equal opportunity provider. We do not discriminate on the basis of race, color, sex, national origin, religion, handicap or familial status.

666 Paterson Ave, East Rutherford, NJ 07073
P: (201) 448-9003 F: (201) 300-0133

8/17/2022

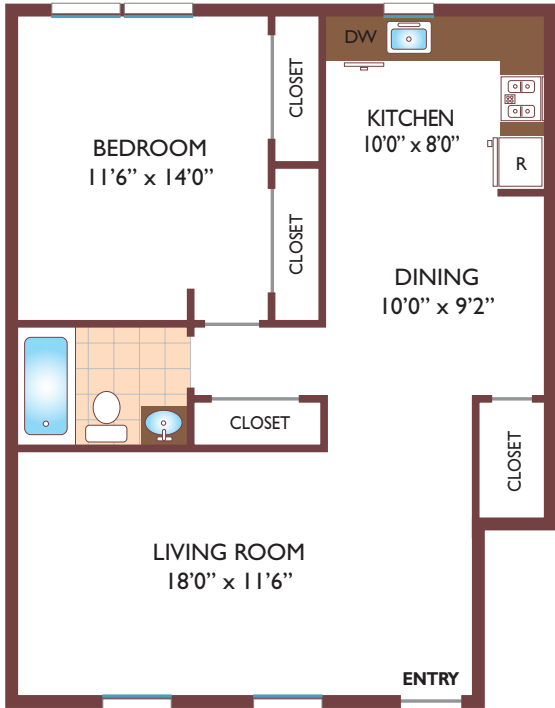


www.RutherfordHeightsNJ.com
RutherfordHeights.Rental@GardenCommunities.com

Rutherford Heights

One Bedroom Floor Plan

with 1 Bath, 770 sq. ft.



Two Bedroom Floor Plan

with 1 Bath, 935 sq. ft.



All dimensions, positions, locations and details are approximate.

All rent prices and community information subject to change.

