

# ASPEN GLEN

1800 Aspen Glen Drive, Hamden, CT 06518 (203) 516-7826



Aspen Glen is a pet friendly community with an impressive collection of 443 units in the New Haven County town of Hamden, CT. These spacious one and two bedroom residences boast interiors ranging from 835 to 1,180 square feet of living space and include fully applianced kitchens with gas oven and range, microwave, built in dishwasher, frost free refrigerator. Full size washer and dryer add to the modern convenience along with private master suites with ceramic tiled baths and your choice of a private patio or balcony. The community offers numerous onsite amenities including controlled entry access, fitness center and clubhouse with swimming pool, walking paths and picnic area.

[www.AspenGlenCT.com](http://www.AspenGlenCT.com) (203) 516-7826



WE ARE AN EQUAL HOUSING OPPORTUNITY PROVIDER. WE DO NOT DISCRIMINATE ON THE BASIS OF RACE, COLOR, SEX, NATIONAL ORIGIN, RELIGION, HANDICAP OR FAMILIAL STATUS.

WF-AspenGlen07072020



# Aspen Glen

Bedrooms	Plan	Baths	Area	Pricing
1	The Glen - Age Restricted	1	814 sq. ft.	\$1745
1	The Aspen - Age Restricted	1	1080 sq. ft.	\$1980
2	Cheshire - Age Restricted	2	1148 sq. ft.	\$2045
2	Woodbridge - Age Restricted	2	1148 sq. ft.	\$2045
2	The Cheshire	2	1179 sq. ft.	\$2055
2	The Woodbridge	2	1154 sq. ft.	\$2055
2	NEW Woodbridge	2	1154 sq. ft.	\$2255
2	NEW Cheshire	2	1179 sq. ft.	\$2255

Rent includes: Trash Removal & Water \*All prices are subject to change.

## Apartment Amenities

- Ceramic Tile Kitchen and Bathrooms
- Private Patio or Balcony
- Walk-In Closet in Select Units
- Furnished Apartments
- Reserved Covered Parking
- Washer & Dryer in Apartment
- Plush Wall-To-Wall Carpet
- Resident Controlled Central Air & Heat
- Wood Laminate Flooring

## Community Amenities

- 24-hour Emergency Maintenance
- Covered Parking
- Jogging Path/Walking Trail
- Reserved Parking
- Cable Ready
- Fitness Center
- Picnic/Barbecue Area
- Swimming Pool
- Controlled Access at Building Entry
- Gated Community
- Playground
- Tennis Court(s)

## Appliances

- Dishwasher
- Oven/Range
- Disposal
- Refrigerator/Freezer
- Microwave
- Washer & Dryer in Apartment

Visit our website - <https://www.AspenGlenCT.com>

## Rental Office Hours

Monday	Tuesday	Wednesday	Thursday	Friday	Saturday	Sunday
10-6	10-6	10-6	10-6	10-6	10-5	10-5

When you decide to join us, please provide us the following at time of application:

- Non-refundable online application processing Fee. \$75 per applicant
- \$200 online deposit is required to reserve an apartment. To be applied to your Security Deposit upon approval; or refunded if your application is declined.
- Two Current Pay Stubs
- Valid Photo ID
- Social Security Card

\*Pet Restrictions Apply

We are an equal opportunity provider. We do not discriminate on the basis of race, color, sex, national origin, religion, handicap or familial status.

1800 Aspen Glen Drive, Hamden, CT 06518  
P: (203) 516-7826 F: (203) 288-0059

11/27/2021



<https://www.AspenGlenCT.com>  
[AspenGlen@GardenCommunities.com](mailto:AspenGlen@GardenCommunities.com)

# Aspen Glen

Standard Inventory Buildings & Age Restricted Building

## Two Bedroom Floor Plan

with 2 Baths, **The Woodbridge**

*Standard Inventory* 1154 sq.ft.

*Age Restricted* 1150 sq.ft.



## Two Bedroom Floor Plan

with 2 Baths, **The Cheshire**

*Standard Inventory* 1179 sq.ft.

*Age Restricted* 1150 sq.ft.



All dimensions, positions, locations and details are approximate.

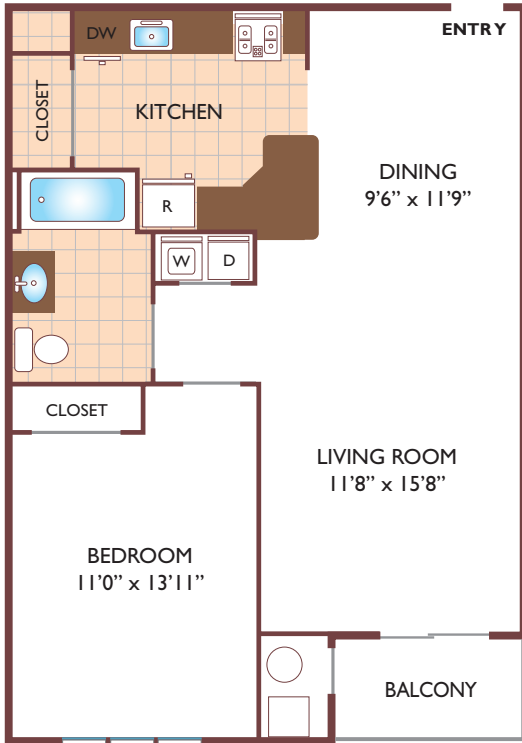
All rent prices and community information subject to change.



# Aspen Glen

Age Restricted Building

## One Bedroom Floor Plan The Glen with 1 Bath, 814 sq.ft.



## One Bedroom Floor Plan The Aspen with Den & 1 Bath, 1080 sq. ft.



All dimensions, positions, locations and details are approximate.  
All rent prices and community information subject to change.

