

# SPRING MILL MANOR

32 Blacks Lane, Springfield, NJ 07081 (973) 947-8764



Spring Mill Manor is a private enclave of modern one and two bedroom luxury rental apartments for age 55+ adults. Our building offers the convenience of two entries, which can be remotely accessed and monitored with voice/video security by each resident from their respective unit or swipe card. Spring Mill Manor lies in the beautiful Township of Springfield, which is conveniently located near the towns of Millburn, Westfield, and Short Hills. We are conveniently located close to NJDOT Park and Ride, Routes 24, 78, 287, GSP, NJ Turnpike and Newark Liberty International Airport.

[www.SpringMillManorNJ.com](http://www.SpringMillManorNJ.com) (973) 947-8764



WE ARE AN EQUAL HOUSING OPPORTUNITY PROVIDER. WE DO NOT DISCRIMINATE ON THE BASIS OF RACE, COLOR, SEX, NATIONAL ORIGIN, RELIGION, HANDICAP OR FAMILIAL STATUS.

WF-SpringMill032017



# Spring Mill Manor

Bedrooms	Plan	Baths	Area	Pricing
1	E	1	980 sq. ft.	\$2035
2	C	2	1065-1225 sq. ft.	\$2235 - \$2335
2	A	1	1150 sq. ft.	\$2305
2	F	2	1490 sq. ft.	\$2435

\*All prices are subject to change.

## Apartment Amenities

- Breakfast Bar
- Walk-In Closet in Select Units
- New/Renovated Interiors
- Washer & Dryer in Apartment
- Plush Wall-To-Wall Carpet

## Community Amenities

- 24-Hour Emergency Maintenance
- Clubhouse
- Fitness Center
- Verizon FIOS Available
- Active Adult Community-55+
- Controlled Access at Building Entry
- Natural Gas
- Cable Ready
- Covered Parking
- Security Lighting

## Appliances

- Dishwasher
- Refrigerator/Freezer
- Microwave
- Oven/Range

Visit our website - [www.SpringMillManorNJ.com](http://www.SpringMillManorNJ.com)

## Rental Office Hours

Monday	Tuesday	Wednesday	Thursday	Friday	Saturday	Sunday
9-5	9-5	9-5	9-5	9-5	By Appt.	By Appt.

## When you decide to join us, please provide us the following at time of application:

- Two Personal Checks or Money Orders. We do not accept cash:
  1. Non-refundable Application processing Fee payable to GARDEN HOMES. \$50 for 1st Applicant; \$25 for each additional Applicant.
  2. \$200 check payable to SPRING MILL MANOR LLC. To be applied to your Security Deposit upon approval; or refunded if your application is declined.
- Two Current Pay Stubs
- Valid Photo ID
- Social Security Card

**Serviced By The Villas Leasing Office**  
200 Springfield Avenue  
Springfield, NJ 07081

We are an equal opportunity provider. We do not discriminate on the basis of race, color, sex, national origin, religion, handicap or familial status.

32 Blacks Lane, Springfield, NJ 07081  
P: (973) 947-8764 F: (973) 379-5623

7/31/2021



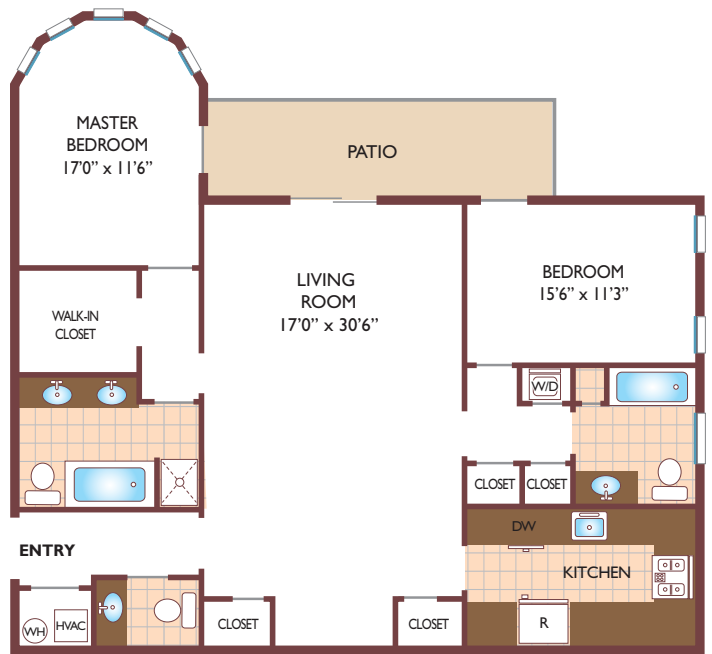
[www.SpringMillManorNJ.com](http://www.SpringMillManorNJ.com)  
[SpringMillManor.Rental@GardenCommunities.com](mailto:SpringMillManor.Rental@GardenCommunities.com)

# Skyline Ridge

**Two Bedroom Floor Plan A**  
with 2 & 1/2 Baths, 1536 sq. ft.



**Two Bedroom Floor Plan B**  
with 2 & 1/2 Baths, 1795 sq. ft.



**Two Bedroom Floor Plan C**  
with 2 & 1/2 Baths, 1925 sq. ft.



All dimensions, positions, locations and details are approximate.  
All rent prices and community information subject to change.

