

SKYLINE RIDGE

100 Wilson Road, Springfield, NJ 07081 (973) 821-7667



Skyline Ridge is a collection of 93 residences perched on a hillside site that overlooks the ever changing Manhattan skyline in the town of Springfield, N.J. The luxury rental community features six housing layouts. Each spacious two bedroom unit includes a gourmet kitchen with GE appliances, Caesar Stone counter tops, living and dining room (per plan), master suite with walk-in closet, sumptuous bath with Jacuzzi tub and separate shower, private balcony and secure indoor parking with keyed storage space. Residents at Skyline Ridge also enjoy recreational amenities and services, including a state-of-the art fitness center, Club Room and the convenience of a 24-hour concierge service.

www.SkylineRidgeNJ.com (973) 821-7667



WE ARE AN EQUAL HOUSING OPPORTUNITY PROVIDER. WE DO NOT DISCRIMINATE ON THE BASIS OF RACE, COLOR, SEX, NATIONAL ORIGIN, RELIGION, HANDICAP OR FAMILIAL STATUS.

WF-Skyline032017



Skyline Ridge

Bedrooms	Plan	Baths	Area	Pricing
2	Plan D	2.5	1440 sq. ft.	\$4400 - \$4550
2	Plan A	2.5	1540 sq. ft.	\$4550 - \$5150
2	Plan B	2.5	1800 sq. ft.	\$5625 - \$6050

*All prices are subject to change.

Apartment Amenities

- Eat-In Kitchen
- Kitchen Island
- Wet Bar
- Garages Available
- Plush Wall-To-Wall Carpet
- Jet Tub
- Private Patio or Balcony

Community Amenities

- 24-Hour Emergency Maintenance
- Fitness Center
- Security Lighting
- Cable Ready
- Jogging Path/Walking Trail
- Verizon FIOS Available
- Clubhouse
- Laundry Facilities

Appliances

- Cook Top
- Oven/Range
- Water Filter
- Dishwasher
- Range Hood
- Microwave
- Refrigerator/Freezer

Visit our website - www.SkylineRidgeNJ.com

Rental Office Hours

Monday	Tuesday	Wednesday	Thursday	Friday	Saturday	Sunday
8:30 - 4:30	8:30 - 4:30	8:30 - 4:30	8:30 - 4:30	8:30 - 4:30	8:30 - 4:30	8:30 - 4:30

When you decide to rent with Garden Communities, the following items will be required when you submit your application:

- Non-refundable online application processing Fee. \$85 per applicant
- An online deposit of \$500 in order to reserve an apartment. This amount will be applied to your first month's rent upon approval and ONLY refunded if your application is declined.
- A valid photo ID, social security card and two current pay stubs.

We are an equal opportunity provider. We do not discriminate on the basis of race, color, sex, national origin, religion, handicap or familial status.

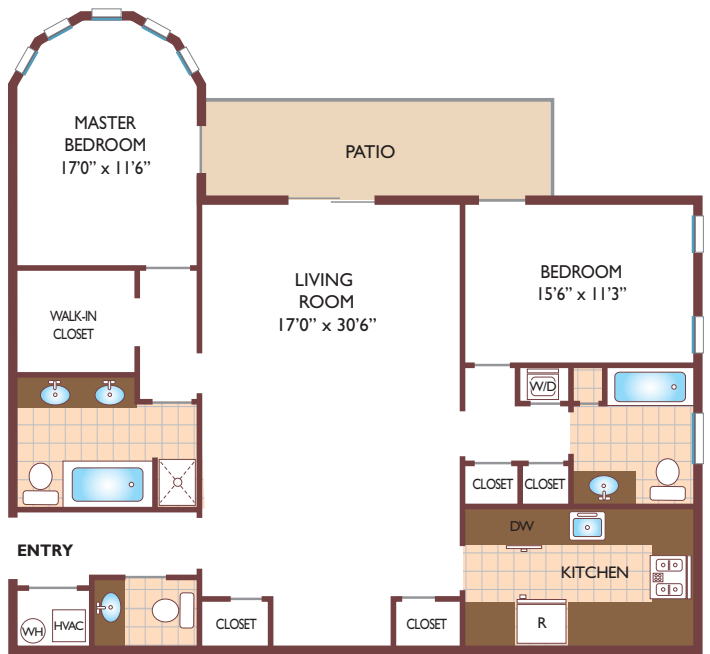


Skyline Ridge

Two Bedroom Floor Plan A
with 2 & 1/2 Baths, 1536 sq. ft.



Two Bedroom Floor Plan B
with 2 & 1/2 Baths, 1795 sq. ft.



Two Bedroom Floor Plan C
with 2 & 1/2 Baths, 1925 sq. ft.



All dimensions, positions, locations and details are approximate.
All rent prices and community information subject to change.

