



# Scotch Plains Gardens

E. Front Street and Valleyscent • Scotch Plains, NJ 07076 • 908.233.6393

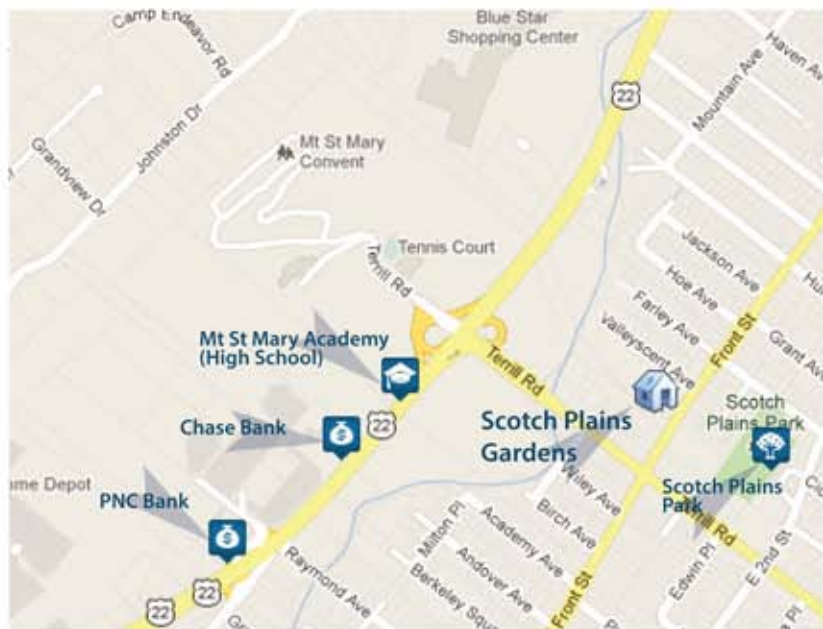
*Scotch Plains Gardens is a collection of 96 garden-style apartments in the Union County Township of Scotch Plains, N.J.*

*Apartments include one bedroom layout and feature 830 square feet of living space. Interior appointments include a refrigerator, range, hardwood floors throughout and air conditioner. Heat and hot water are included as well.*

*Residents enjoy the convenience of having an onsite laundry facility and 24-hour emergency maintenance available.*

## DIRECTIONS

GSP North to exit 135 towards Clark/Westfield. Sharp right onto Brant Ave. Turn right onto Westfield Ave and continue onto Rahway Ave for about 2 miles. Turn right onto Broad Street and make a sharp left onto NJ-28 West/South Ave West. Continue approximately 2.4 miles and turn right onto Terrill Road. Continue approximately 1 mile turn right onto Front Street and the Community is on your left.



## SERVICED BY

**Country Club Village Leasing Office**  
320 Country Club Lane  
Scotch Plains, NJ 07076  
908.233.6393



**Garden  
Communities**



# Scotch Plains Gardens

---

Bedrooms	Plan	Baths	Area	Pricing
1	One Bedroom	1	830 sq. ft.	\$1520 - \$1660

\*All prices are subject to change.

---

## Apartment Amenities

- Air Conditioning
- Hardwood Floors

## Community Amenities

- 24-Hour Emergency Maintenance
- Laundry Facilities
- Smoke-Free Community
- Cable Ready
- Natural Gas
- Top Rated Scotch Plains Public School System
- Easy Access To NYC Transportation
- Security Lighting

## Appliances

- Oven/Range
  - Range Hood
  - Refrigerator/Freezer
- 

Visit our website - [www.ScotchPlainsGardensNJ.com](http://www.ScotchPlainsGardensNJ.com)

---

## Rental Office Hours

Monday	Tuesday	Wednesday	Thursday	Friday	Saturday	Sunday
10-5	10-5	10-5	10-8	10-5	10-5	10-5

---

**When you decide to rent with Garden Communities, the following items will be required when you submit your application:**

- Non-refundable online application processing Fee. \$75 per applicant
- An online deposit of \$500 in order to reserve an apartment. This amount will be applied to your first month's rent upon approval and ONLY refunded if your application is declined.
- A valid photo ID, social security card and two current pay stubs.

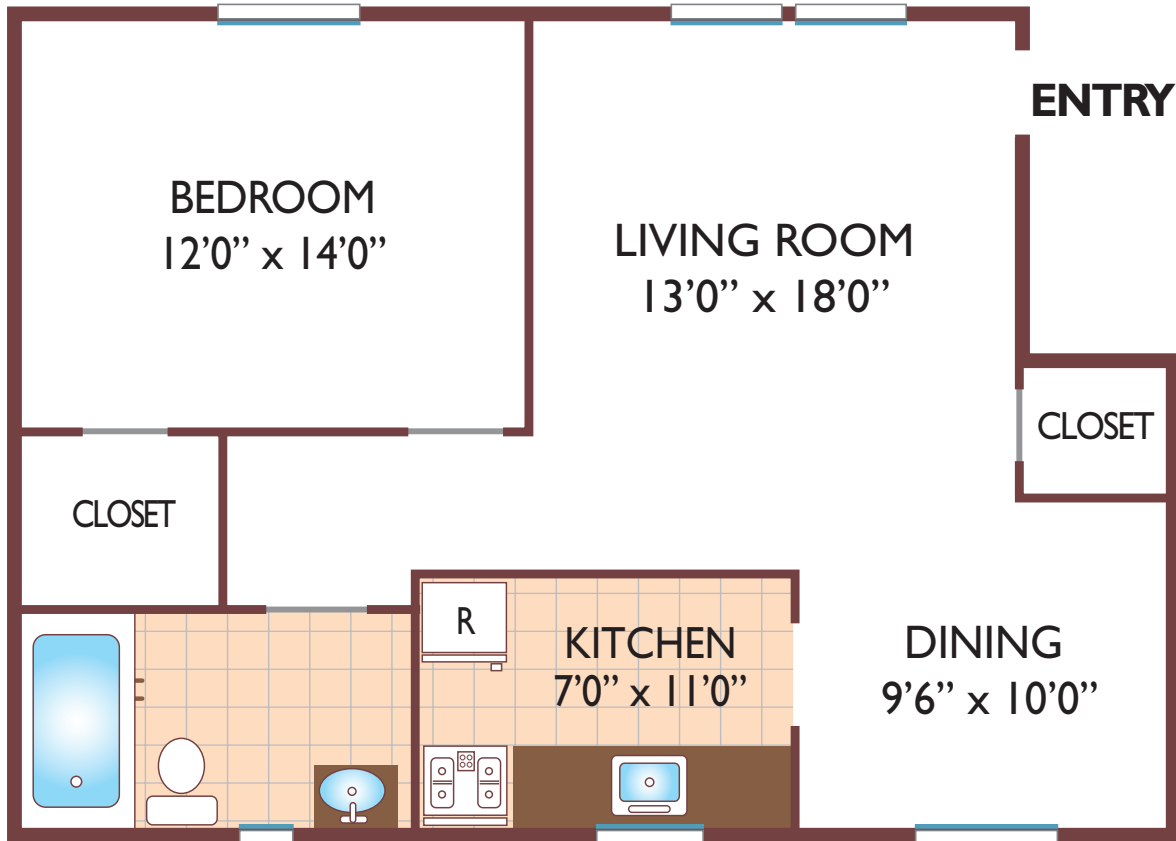
We are an equal opportunity provider. We do not discriminate on the basis of race, color, sex, national origin, religion, handicap or familial status.



# Scotch Plains Gardens

## One Bedroom Floor Plan

Ground Level Unit  
with 1 Bath, 830 sq. ft.  
3<sup>1</sup>/<sub>2</sub> Rooms



All dimensions, positions, locations and details are approximate.

All rent prices and community information subject to change.

