

RIVERFRONT AT CRANFORD STATION

105 Chestnut Street, Cranford, NJ 07016 (908) 842-0805



Riverfront at Cranford Station brings a new dimension to luxury residential rental living. Offering spacious one and two bedroom floor plans ranging in 950 -1650 square feet. Riverfront is a commuter-friendly community with the Cranford Station on Raritan Train Line directly across the street. Each spacious apartment home includes assigned parking, a gourmet kitchen with Stainless Steel GE appliances, Granite Countertops, dining room and living room with a Juliet Balcony or Patio. The Master Suite includes extensive walk-in closet, sumptuous bath with double sink, separate shower and large soaking tub (per plan). Our residents also enjoy a state of the art fitness center and clubroom.

www.RiverfrontNJ.com (908) 842-0805



WE ARE AN EQUAL HOUSING OPPORTUNITY PROVIDER. WE DO NOT DISCRIMINATE ON THE BASIS OF RACE, COLOR, SEX, NATIONAL ORIGIN, RELIGION, HANDICAP OR FAMILIAL STATUS.

WF-Riverfront032017



Riverfront At Cranford Station

Bedrooms	Plan	Baths	Area	Pricing
1	1A	1	950 sq. ft.	\$2800
2	2A	2	1380 sq. ft.	\$3310 - \$3530
2	2B	2	1385 sq. ft.	\$3530
2	2C	2	1350 sq. ft.	\$3530
2	2D	2	1650 sq. ft.	\$4000 - \$4130

*All prices are subject to change.

Apartment Amenities

- 1- & 2-Bedroom Apartments
- Granite Kitchen Countertops
- Oversized Closets
- Stainless Steel Designer Appliances
- Eat-In Kitchen
- Hardwood Floors
- Resident Controlled Central Air & Heat
- Generous Closet Space
- New Interiors
- Spacious Floor Plans

Community Amenities

- Celebration/Gathering Space
- Courtyard Terrace
- Elevator
- Landscaped Amenity Deck
- Smoke-Free Community
- Clubhouse
- Covered Parking
- Fitness Center
- Pet Friendly
- Walking Distance to NYC Transportation
- Common Lounge
- Easy Access To NYC Transportation
- Jogging Path/Walking Trail
- Public Transportation
- Walking distance to restaurants and shops

Appliances

- Dishwasher
- Range Hood
- Microwave
- Refrigerator/Freezer
- Oven/Range

Visit our website - www.RiverfrontNJ.com

Rental Office Hours

Monday 10-5	Tuesday 10-5	Wednesday 10-5	Thursday 10-5	Friday 10-5	Saturday 10-5	Sunday closed
----------------	-----------------	-------------------	------------------	----------------	------------------	------------------

When you decide to join us, please provide us the following at time of application:

- Non-refundable online application processing Fee. \$75 per applicant
- \$500 online deposit is required to reserve an apartment. To be applied to your Security Deposit upon approval; or refunded if your application is declined.
- Two Current Pay Stubs
- Valid Photo ID
- Social Security Card

We are an equal opportunity provider. We do not discriminate on the basis of race, color, sex, national origin, religion, handicap or familial status.

105 Chestnut Street , Cranford, NJ 07016
P: (908) 842-0805 F: (908) 272-3099

10/21/2021

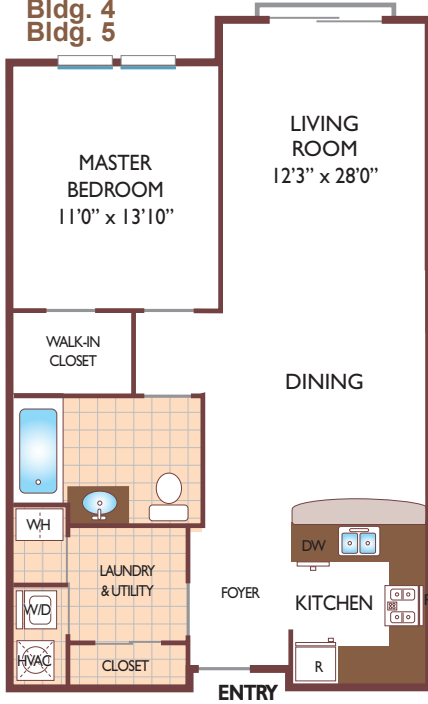


www.RiverfrontNJ.com
Riverfront.Rental@GardenCommunities.com

Riverfront at Cranford Station

One Bedroom Floor Plan
with 1 Bath, 950 sq. ft.

Plan 1A
Bldg. 4
Bldg. 5



Two Bedroom Floor Plan
with 2 Baths, 1380 sq. ft.

Plan 2A
Bldg. 4
Bldg. 5



Two Bedroom Floor Plan
with 2 Bath, 1385 sq. ft.

Plan 2B
Bldg. 4
Bldg. 5



All dimensions, positions, locations and details are approximate.
All rent prices and community information subject to change.

Riverfront at Cranford Station

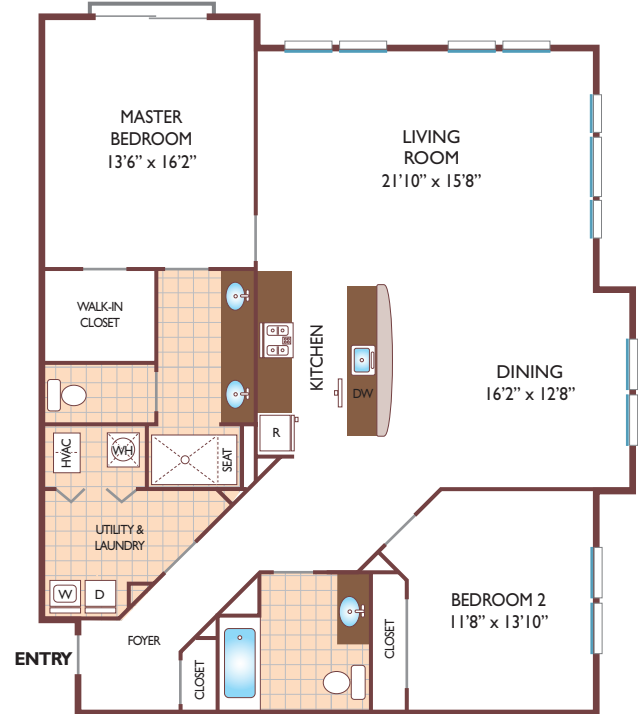
Two Bedroom Floor Plan
with 2 Bath, 1350 sq. ft.

Plan 2C
Bldg. 5



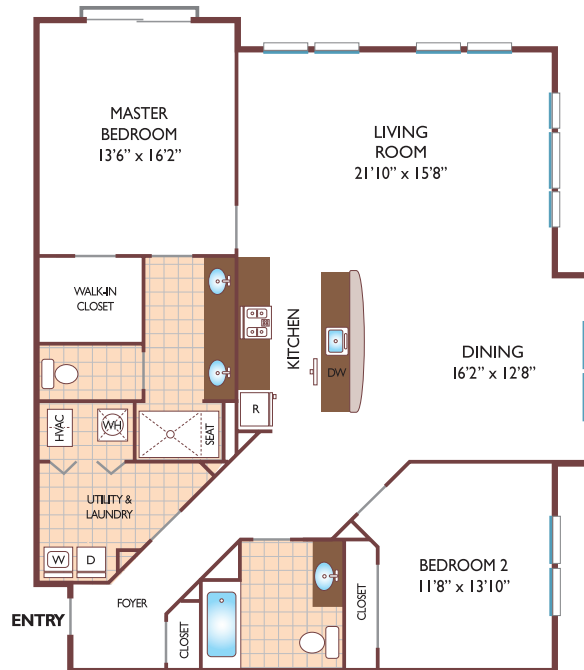
Two Bedroom Floor Plan
with 2 Baths, 1650 sq. ft.

Plan 2D
Bldg. 5



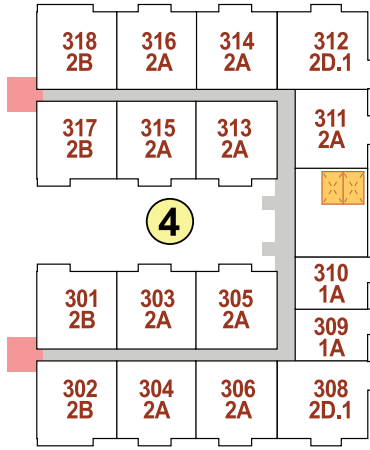
Two Bedroom Floor Plan
with 2 Baths, 1650 sq. ft.

Plan 2D.1
Bldg. 4

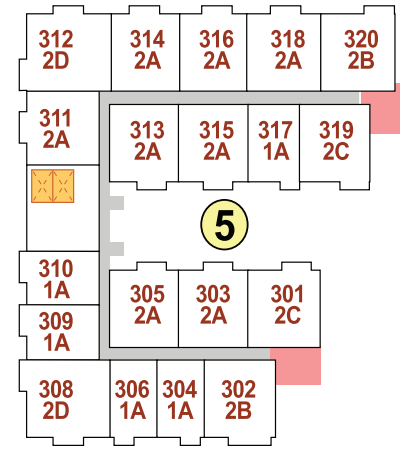
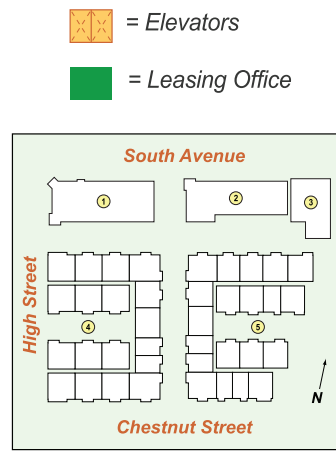


All dimensions, positions, locations and details are approximate.
All rent prices and community information subject to change.

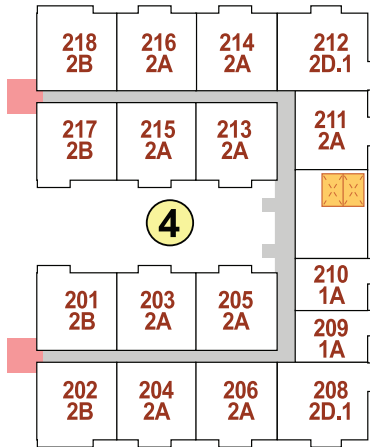
Riverfront at Cranford Station



Third Floor



Third Floor



Second Floor

Elevator Areas for Bldg. 4

1st Floor -- Resident's Lounge, Trash Disposal, Restroom

2nd Floor -- Fitness Center, Trash Disposal, Restroom

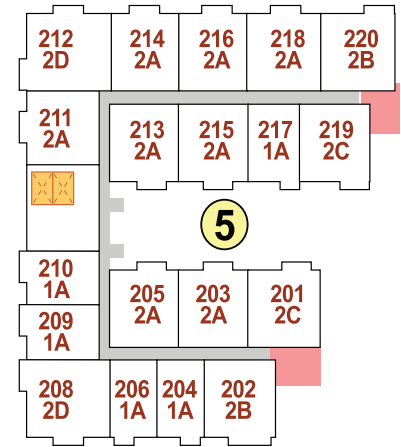
3rd Floor -- Community Room, Trash Disposal, Restroom

Elevator Areas for Bldg. 5

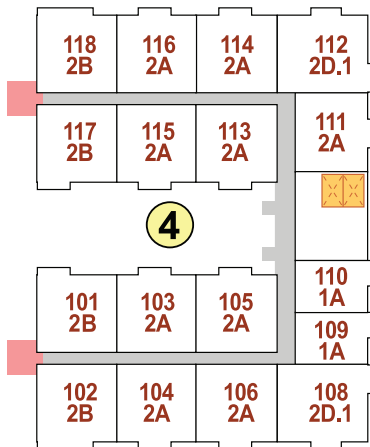
1st Floor -- Resident's Lounge, Leasing Office, Trash Disposal, Restroom

2nd Floor -- Fitness Center, Trash Disposal, Restroom

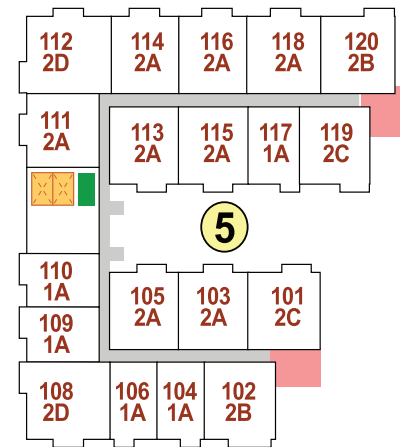
3rd Floor -- Community Room, Trash Disposal, Restroom



Second Floor



First Floor



First Floor

