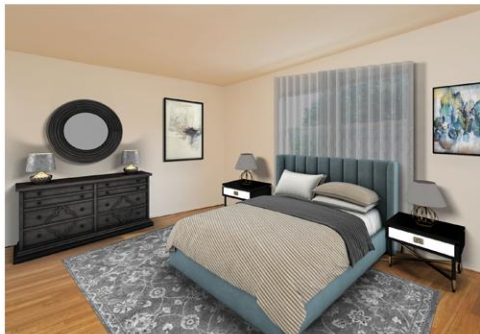


# PINE VIEW GARDENS

884 S. Springfield Avenue, Springfield, NJ 07081 (973) 963-4813



An intimate collection of just 41 garden-style apartments, Pine View Gardens is located in Union County's Springfield Township. Each two and three bedroom TownHome has been recently renovated and includes an eat-in-kitchen with dishwasher, refrigerator and oven, hardwood flooring throughout, central air conditioning, a patio or deck (per plan), washer and dryer in unit and extra storage. Residences range in size from 1,010 to 1,470 square feet of living space. Garages are available onsite and we provide 24-hour emergency maintenance for added convenience.

[www.PineViewGardensNJ.com](http://www.PineViewGardensNJ.com) (973) 963-4813



WE ARE AN EQUAL HOUSING OPPORTUNITY PROVIDER. WE DO NOT DISCRIMINATE ON THE BASIS OF RACE, COLOR, SEX, NATIONAL ORIGIN, RELIGION, HANDICAP OR FAMILIAL STATUS.

WF-PineViewGard05042020



# Pineview Gardens

Bedrooms	Plan	Baths	Area	Pricing
2	Two Bedroom Townhome	1.5	1010 sq. ft.	\$2465 - \$2615
3	Three Bedroom Townhome	1.5	1470 sq. ft.	\$2695 - \$2720

\*All prices are subject to change.

## Apartment Amenities

- Carpeted Bedrooms
- Private Patio or Balcony
- Eat-In Kitchen
- Washer & Dryer in Apartment
- Hardwood Floors

## Community Amenities

- 24-Hour Emergency Maintenance
- Security Lighting
- Cable Ready
- Natural Gas

## Appliances

- Dishwasher
- Range Hood
- Microwave
- Refrigerator/Freezer
- Oven/Range
- Washer & Dryer in Apartment

Visit our website - [www.PineViewGardensNJ.com](http://www.PineViewGardensNJ.com)

## Rental Office Hours

Monday	Tuesday	Wednesday	Thursday	Friday	Saturday	Sunday
9-4:30	9-4:30	9-4:30	9-4:30	9-4:30	10-4	closed

**When you decide to rent with Garden Communities, the following items will be required when you submit your application:**

- Non-refundable online application processing Fee. \$75 per applicant
- An online deposit of \$500 in order to reserve an apartment. This amount will be applied to your first month's rent upon approval and ONLY refunded if your application is declined.
- A valid photo ID, social security card and two current pay stubs.

We are an equal opportunity provider. We do not discriminate on the basis of race, color, sex, national origin, religion, handicap or familial status.

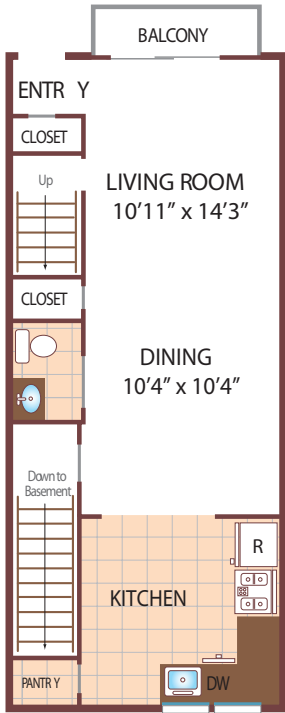


# Pine View Garden

## Two Bedroom Floor Plan

TownHome with Basement

with 1 and 1/2 Baths, 1010 sq. ft.



First Floor

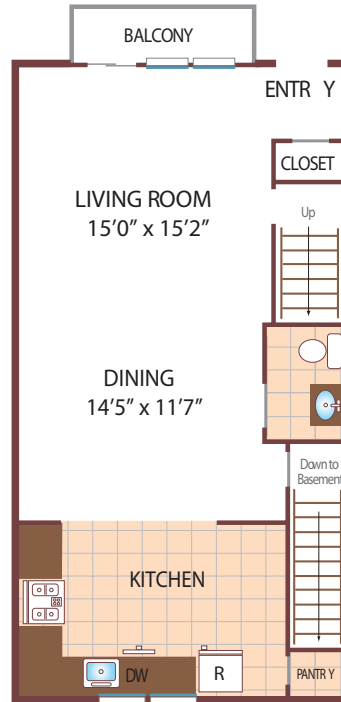


Second Floor

## Three Bedroom Floor Plan

TownHome with Basement

with 1 and 1/2 Baths, 1470 sq. ft.



First Floor



Second Floor

All dimensions, positions, locations and details are approximate.

All rent prices and community information subject to change.

