

FLORAL GARDENS

835 Mountain Avenue, Springfield, NJ 07081 (973) 821-7627



Located in Union County's Springfield Township is Floral Gardens, a collection of just 29 two-bedroom rental units. Each newly renovated residence features eat-in kitchens with dishwashers, refrigerators, ovens, hardwood floors throughout and an air conditioner. These spacious apartments range in size from 1,050 to 1,305 square feet. The community also boasts an onsite laundry facility and 24-hour emergency maintenance.

www.FloralGardensNJ.com (973) 821-7627



WE ARE AN EQUAL HOUSING OPPORTUNITY PROVIDER. WE DO NOT DISCRIMINATE ON THE BASIS OF RACE, COLOR, SEX, NATIONAL ORIGIN, RELIGION, HANDICAP OR FAMILIAL STATUS.

WF-FloralGard102721



Floral Gardens

Bedrooms	Plan	Baths	Area	Pricing
2	Two Bedroom	1	1050 sq. ft.	\$2250
2	Two Bedroom - Deluxe	1	1305 sq. ft.	\$2400

Rent includes: Heat and Hot Water *All prices are subject to change.

Apartment Amenities

- Air Conditioning
- Eat-In Kitchen
- Hardwood Floors

Community Amenities

- 24-Hour Emergency Maintenance
- Cable Ready
- Laundry Facilities
- Natural Gas
- Security Lighting
- Verizon FIOS Available

Appliances

- Dishwasher
- Oven/Range
- Range Hood
- Refrigerator/Freezer

Visit our website - www.FloralGardensNJ.com

Rental Office Hours

Monday	Tuesday	Wednesday	Thursday	Friday	Saturday	Sunday
9-4:30	9-4:30	9-4:30	9-4:30	9-4:30	10-4	closed

When you decide to rent with Garden Communities, the following items will be required when you submit your application:

- Non-refundable online application processing Fee. \$75 per applicant
- An online deposit of \$500 in order to reserve an apartment. This amount will be applied to your first month's rent upon approval and ONLY refunded if your application is declined.
- A valid photo ID, social security card and two current pay stubs.

We are an equal opportunity provider. We do not discriminate on the basis of race, color, sex, national origin, religion, handicap or familial status.



Floral Gardens

Two Bedroom Floor Plan

Standard

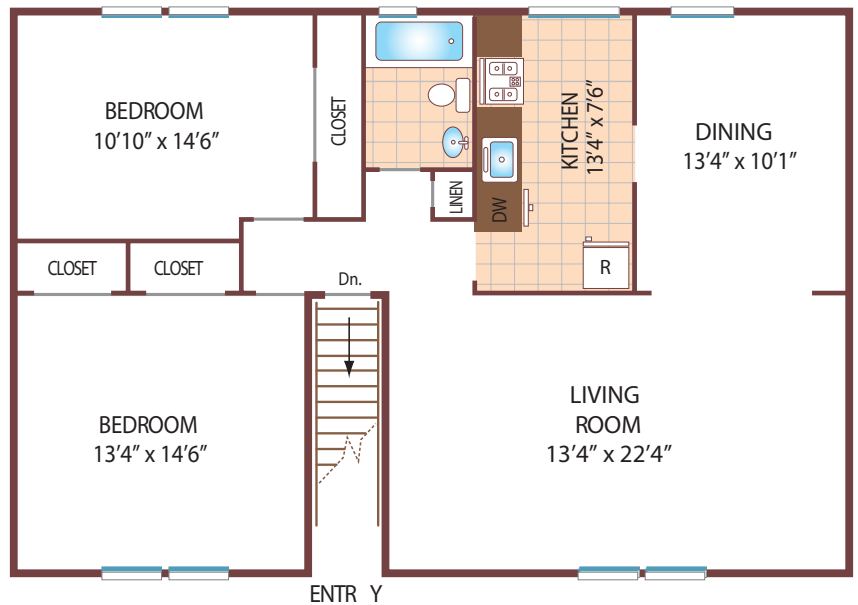
Lower, with 1 Bath, 1050 sq. ft.



Two Bedroom Floor Plan

Deluxe - with Dining Room

Upper, with 1 Bath, 1305 sq. ft.



All dimensions, positions, locations and details are approximate.

All rent prices and community information subject to change.